

# Anti-Merlin (Phospho-Ser10) Antibody



<u>Catalog No.</u>	<u>Size</u>
A100214-01	50 µl
A100214-02	100 µl

<b>Specificity</b>	Anti- Merlin (Phospho-Ser10) (human mouse rat)
<b>Source</b>	Rabbit Polyclonal
<b>Application</b>	WB IHC ELISA
<b>Form</b>	Liquid, 1 mg/ml

## Product

**Swiss-Prot No.:** P35240

**Other Names:** MERL; moesin-ezrin-radizin-like protein; neurofibromatosis type 2 gene; neurofibromatosis-2; Neurofibromin 2; NF-2; NF2; SCH; Schwannomerlin; schwannomerlin; Schwannomin

## Specificity and Sensitivity

Merlin (Phospho-Ser10) antibody detects endogenous levels of Merlin only when phosphorylated at serine 10.

## Source and Purification

The antiserum was produced against synthesized phosphopeptide derived from human Merlin around the phosphorylation site of serine 10 (R-M-SP-F-S). The antibody was affinity-purified by affinity-chromatography using epitope-specific immunogen.

## Application Notes

Optimal working dilutions should be determined experimentally by the investigator. Suggested starting dilutions are as follows:  
WB 1:500-1:1000 IHC 1:50~1:100 ELISA 1:1000

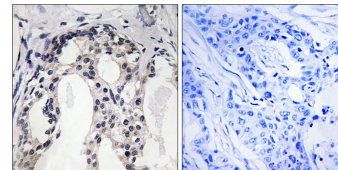
## Storage Buffer

Rabbit IgG in phosphate buffered saline (without Mg<sup>2+</sup> and Ca<sup>2+</sup>), pH 7.4, 150mM NaCl, 0.02% sodium azide and 50% glycerol.

## Storage Instructions

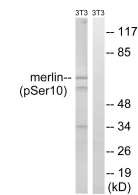
Stable for 1 year at -20°C from date of shipment. For maximum recovery of product, centrifuge the original vial after thawing and prior to removing the cap. Aliquot to avoid repeated freezing and thawing. Aliquot will be stable at 4°C for 3 months.

## Images



P-peptide - +

Immunohistochemistry analysis of paraffin-embedded human breast carcinoma tissue using Merlin (Phospho-Ser10) antibody.



IFN + +  
P-peptide - +

Western blot analysis of extracts from 3T3 cells, treated with IFN (2500U/ml, 30mins), using Merlin (Phospho-Ser10) antibody.

## Related Products

- PW001: Super ECL Assay kit
- E030120 : HRP, Goat Anti-Rabbit IgG(H+L)
- E030220 : AP, Goat Anti-Rabbit IgG(H+L)
- E021010: Anti-GAPDH Mouse Monoclonal Antibody
- E021020: Anti-beta Actin Mouse Monoclonal Antibody
- E022330: Anti-His Tag Mouse Monoclonal Antibody-HRP