

Anti-SHP-1 (Phospho-Tyr564) Antibody



<u>Catalog No.</u>	<u>Size</u>
A100220-01	50 µl
A100220-02	100 µl

Specificity	Anti- SHP-1 (Phospho-Tyr564) (human)
Source	Rabbit Polyclonal
Application	WB ELISA
Form	Liquid, 1 mg/ml

Product

Swiss-Prot No.: P29350

Other Names: 70Z-SHP; EC 3.1.3.48; HCP; HCPH; Hematopoietic cell protein-tyrosine phosphatase; Protein-tyrosine phosphatase 1C; Protein-tyrosine phosphatase SHP-1; Protein-tyrosine phosphatase, non-receptor type 6; PTN6; PTP-1C; PTP1C; PTPN6; SH-PTP1; SHP1

Specificity and Sensitivity

SHP-1 (Phospho-Tyr564) antibody detects endogenous levels of SHP-1 only when phosphorylated at tyrosine 564.

Source and Purification

The antiserum was produced against synthesized phosphopeptide derived from human SHP-1 around the phosphorylation site of tyrosine 564 (D-V-YP-E-N). The antibody was affinity-purified by affinity-chromatography using epitope-specific immunogen.

Application Notes

Optimal working dilutions should be determined experimentally by the investigator. Suggested starting dilutions are as follows:

WB 1:500~1:1000 ELISA 1:10000

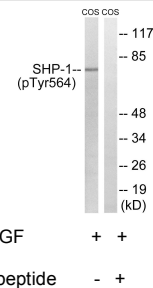
Storage Buffer

Rabbit IgG in phosphate buffered saline (without Mg²⁺ and Ca²⁺), pH 7.4, 150mM NaCl, 0.02% sodium azide and 50% glycerol.

Storage Instructions

Stable for 1 year at -20°C from date of shipment. For maximum recovery of product, centrifuge the original vial after thawing and prior to removing the cap. Aliquot to avoid repeated freezing and thawing. Aliquot will be stable at 4°C for 3 months.

Images



Western blot analysis of extracts from COS7 cells, treated with EGF (200ng/ml, 30mins), using SHP-1 (Phospho-Tyr564) antibody.

Related Products

PW001: Super ECL Assay kit

E030120 : HRP, Goat Anti-Rabbit IgG(H+L)

E030220 : AP, Goat Anti-Rabbit IgG(H+L)

E021010: Anti-GAPDH Mouse Monoclonal Antibody

E021020: Anti-beta Actin Mouse Monoclonal Antibody

E022330: Anti-His Tag Mouse Monoclonal Antibody-HRP