

Anti-ABL1 (Phospho-Thr735) Antibody



<u>Catalog No.</u>	<u>Size</u>
A100227-01	50 µl
A100227-02	100 µl

Specificity	Anti- ABL1 (Phospho-Thr735) (human mouse rat)
Source	Rabbit Polyclonal
Application	WB ELISA
Form	Liquid, 1 mg/ml

Product

Swiss-Prot No.: P00519

Other Names: Abelson murine leukemia viral oncogene 1; ABL1; c-ABL; EC 2.7.10.2; JTK7; p150; proto-oncogene tyrosine-protein kinase ABL1; v-abl Abelson murine leukemia viral oncogene 1

Specificity and Sensitivity

ABL1 (Phospho-Thr735) antibody detects endogenous levels of ABL1 only when phosphorylated at threonine 735.

Source and Purification

The antiserum was produced against synthesized phosphopeptide derived from human ABL1 around the phosphorylation site of threonine 735 (S-V-TP-L-P). The antibody was affinity-purified by affinity-chromatography using epitope-specific immunogen.

Application Notes

Optimal working dilutions should be determined experimentally by the investigator. Suggested starting dilutions are as follows:
WB 1:500~1:1000 ELISA 1:1000

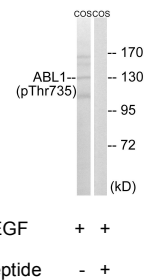
Storage Buffer

Rabbit IgG in phosphate buffered saline (without Mg²⁺ and Ca²⁺), pH 7.4, 150mM NaCl, 0.02% sodium azide and 50% glycerol.

Storage Instructions

Stable for 1 year at -20°C from date of shipment. For maximum recovery of product, centrifuge the original vial after thawing and prior to removing the cap. Aliquot to avoid repeated freezing and thawing. Aliquot will be stable at 4°C for 3 months.

Images



Western blot analysis of extracts from COS cells, treated with EGF (200ng/ml, 30mins), using ABL1 (Phospho-Thr735) antibody.

Related Products

- PW001: Super ECL Assay kit
- E030120 : HRP, Goat Anti-Rabbit IgG(H+L)
- E030220 : AP, Goat Anti-Rabbit IgG(H+L)
- E021010: Anti-GAPDH Mouse Monoclonal Antibody
- E021020: Anti-beta Actin Mouse Monoclonal Antibody
- E022330: Anti-His Tag Mouse Monoclonal Antibody-HRP