

# Anti-AKT1/2/3 (Phospho-Tyr315/316/312) Antibody



<u>Catalog No.</u>	<u>Size</u>
A100228-01	50 µl
A100228-02	100 µl

<b>Specificity</b>	Anti- AKT1/2/3 (Phospho-Tyr315/316/312) (human mouse rat)
<b>Source</b>	Rabbit Polyclonal
<b>Application</b>	IHC ELISA
<b>Form</b>	Liquid, 1 mg/ml

## Product

**Swiss-Prot No.:** P31749/P31751/Q9Y243

**Other Names:** AKT; AKT1 kinase; C-AKT; EC 2.7.11.1; kinase Akt1; PKB; PKB-alpha; Protein kinase B; RAC; RAC-alpha serine/threonine kinase; RAC-PK-alpha

## Specificity and Sensitivity

AKT1/2/3 (Phospho-Tyr315/316/312) antibody detects endogenous levels of AKT1/2/3 only when phosphorylated at tyrosine 315/316/312.

## Source and Purification

The antiserum was produced against synthesized phosphopeptide derived from human AKT1/2/3 around the phosphorylation site of tyrosine 315/316/312 (P-E-YP-L-A). The antibody was affinity-purified by affinity-chromatography using epitope-specific immunogen.

## Application Notes

Optimal working dilutions should be determined experimentally by the investigator. Suggested starting dilutions are as follows:

IHC 1:50~1:100 ELISA 1:20000

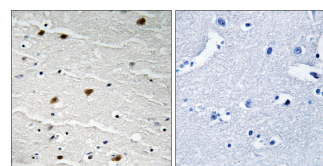
## Storage Buffer

Rabbit IgG in phosphate buffered saline (without Mg<sup>2+</sup> and Ca<sup>2+</sup>), pH 7.4, 150mM NaCl, 0.02% sodium azide and 50% glycerol.

## Storage Instructions

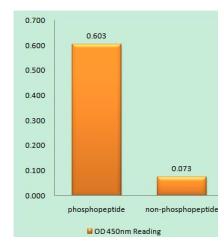
Stable for 1 year at -20°C from date of shipment. For maximum recovery of product, centrifuge the original vial after thawing and prior to removing the cap. Aliquot to avoid repeated freezing and thawing. Aliquot will be stable at 4°C for 3 months.

## Images



P-peptide - +

Immunohistochemistry analysis of paraffin-embedded human brain tissue, using AKT1/2/3 (Phospho-Tyr315/316/312) antibody.



AKT1/2/3 (Phospho-Tyr315/316/312) antibody reacts with epitope-specific phosphopeptide and corresponding non-phosphopeptide. The absorbance readings at 450 nM are shown in the ELISA figure.

## Related Products

PW001: Super ECL Assay kit

E030120 : HRP, Goat Anti-Rabbit IgG(H+L)

E030220 : AP, Goat Anti-Rabbit IgG(H+L)

E021010: Anti-GAPDH Mouse Monoclonal Antibody

E021020: Anti-beta Actin Mouse Monoclonal Antibody

E022330: Anti-His Tag Mouse Monoclonal Antibody-HRP