

Anti-B-RAF (Phospho-Ser446) Antibody



Catalog No.	Size
A100233-01	50 µl
A100233-02	100 µl

Specificity	Anti- B-RAF (Phospho-Ser446) (human mouse)
Source	Rabbit Polyclonal
Application	WB IHC ELISA
Form	Liquid, 1 mg/ml

Product

Swiss-Prot No.: P15056

Other Names: B-RAF; B-RAF proto-oncogene

serine/threonine-protein kinase; B-Raf proto-oncogene

serine/threonine-protein kinase; BRAF; BRAF1; c-RMIL; EC

2.7.1.37; EC 2.7.11.1; kinase B-Raf; p94; RAFB1; RMIL;

RMIL serine/threonine-protein kinase; v-Raf murine sarcoma viral oncogene homolog B1

Specificity and Sensitivity

B-RAF (Phospho-Ser446) antibody detects endogenous levels of B-RAF only when phosphorylated at serine 446.

Source and Purification

The antiserum was produced against synthesized phosphopeptide derived from human B-RAF around the phosphorylation site of serine 446 (R-D-SP-S-D).

The antibody was affinity-purified by affinity-chromatography using epitope-specific immunogen.

Application Notes

Optimal working dilutions should be determined experimentally by the investigator. Suggested starting dilutions are as follows:

WB 1:500~1:3000 IHC 1:50~1:100 ELISA 1:10000

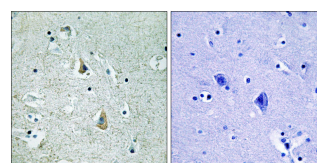
Storage Buffer

Rabbit IgG in phosphate buffered saline (without Mg²⁺ and Ca²⁺), pH 7.4, 150mM NaCl, 0.02% sodium azide and 50% glycerol.

Storage Instructions

Stable for 1 year at -20°C from date of shipment. For maximum recovery of product, centrifuge the original vial after thawing and prior to removing the cap. Aliquot to avoid repeated freezing and thawing. Aliquot will be stable at 4°C for 3 months.

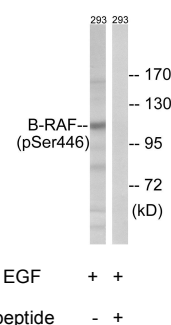
Images



P-peptide

- +

Immunohistochemistry analysis of paraffin-embedded human brain tissue, using B-RAF (Phospho-Ser446) antibody.



EGF + +

P-peptide - +

Western blot analysis of extracts from 293 cells, treated with EGF (200ng/ml, 30mins), using B-RAF (Phospho-Ser446) antibody.

Related Products

PW001: Super ECL Assay kit

E030120 : HRP, Goat Anti-Rabbit IgG(H+L)

E030220 : AP, Goat Anti-Rabbit IgG(H+L)

E021010: Anti-GAPDH Mouse Monoclonal Antibody

E021020: Anti-beta Actin Mouse Monoclonal Antibody

E022330: Anti-His Tag Mouse Monoclonal Antibody-HRP

