

Anti-CaMK2- $\beta / \gamma / \delta$ (Phospho-Thr287) Antibody



<u>Catalog No.</u>	<u>Size</u>
A100234-01	50 μ l
A100234-02	100 μ l

Specificity	Anti- CaMK2- $\beta / \gamma / \delta$ (Phospho-Thr287) (human mouse rat)
Source	Rabbit Polyclonal
Application	WB IHC ELISA
Form	Liquid, 1 mg/ml

Product

Swiss-Prot No.: Q13554/Q13555/Q13557

Other Names: Calcium/calmodulin-dependent protein kinase type II beta chain; CaM kinase II beta subunit; CaM-kinase II beta chain; CAM2; CaMK-II beta subunit; CAMK2B; CAMKB; EC 2.7.1.123; EC 2.7.11.17; KCC2B; kinase CaMK2-beta

Specificity and Sensitivity

CaMK2- $\beta / \gamma / \delta$ (Phospho-Thr287) antibody detects endogenous levels of CaMK2- $\beta / \gamma / \delta$ only when phosphorylated at threonine 287.

Source and Purification

The antiserum was produced against synthesized phosphopeptide derived from human CaMK2- $\beta / \gamma / \delta$ around the phosphorylation site of threonine 287 (Q-E-TP-V-E).

The antibody was affinity-purified by affinity-chromatography using epitope-specific immunogen.

Application Notes

Optimal working dilutions should be determined experimentally by the investigator. Suggested starting dilutions are as follows:

WB 1:500~1:1000 IHC 1:50~1:100 ELISA 1:1000

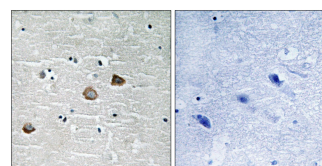
Storage Buffer

Rabbit IgG in phosphate buffered saline (without Mg^{2+} and Ca^{2+}), pH 7.4, 150mM NaCl, 0.02% sodium azide and 50% glycerol.

Storage Instructions

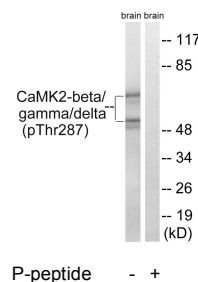
Stable for 1 year at $-20^{\circ}C$ from date of shipment. For maximum recovery of product, centrifuge the original vial after thawing and prior to removing the cap. Aliquot to avoid repeated freezing and thawing. Aliquot will be stable at $4^{\circ}C$ for 3 months.

Images



P-peptide - +

Immunohistochemistry analysis of paraffin-embedded human brain tissue using CaMK2- $\beta / \gamma / \delta$ (Phospho-Thr287) antibody.



Western blot analysis of extracts from rat brain cells, using CaMK2- $\beta / \gamma / \delta$ (Phospho-Thr287) antibody.

Related Products

PW001: Super ECL Assay kit

E030120 : HRP, Goat Anti-Rabbit IgG(H+L)

E030220 : AP, Goat Anti-Rabbit IgG(H+L)

E021010: Anti-GAPDH Mouse Monoclonal Antibody

E021020: Anti-beta Actin Mouse Monoclonal Antibody

E022330: Anti-His Tag Mouse Monoclonal Antibody-HRP