

Anti-EPHA3/4/5 (Phospho-Tyr779/833) Antibody



<u>Catalog No.</u>	<u>Size</u>
A100237-01	50 µl
A100237-02	100 µl

Specificity	Anti- EPHA3/4/5 (Phospho-Tyr779/833) (human mouse rat)
Source	Rabbit Polyclonal
Application	IHC ELISA
Form	Liquid, 1 mg/ml

Product

Swiss-Prot No.: P29320/54764/54756

Other Names: EC 2.7.10.1; EPA3; ephrin type-A receptor 3; ETK; ETK1; HEK; HEK4; kinase EphA3; MEK4; REK4; TYRO-4; TYRO4; tyrosine-protein kinase receptor ETK1; tyrosine-protein kinase receptor REK4

Specificity and Sensitivity

EPHA3/4/5 (Phospho-Tyr779/833) antibody detects endogenous levels of EPHA3/4/5 only when phosphorylated at tyrosine 779.

Source and Purification

The antiserum was produced against synthesized phosphopeptide derived from human EPHA3/4/5 around the phosphorylation site of tyrosine 779 (A-A-YP-T-T).

The antibody was affinity-purified by affinity-chromatography using epitope-specific immunogen.

Application Notes

Optimal working dilutions should be determined experimentally by the investigator. Suggested starting dilutions are as follows:

IHC 1:50~1:100 ELISA 1:10000

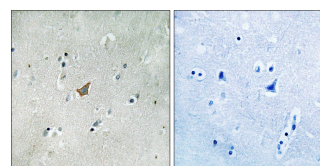
Storage Buffer

Rabbit IgG in phosphate buffered saline (without Mg²⁺ and Ca²⁺), pH 7.4, 150mM NaCl, 0.02% sodium azide and 50% glycerol.

Storage Instructions

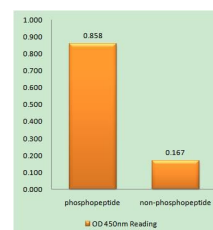
Stable for 1 year at -20°C from date of shipment. For maximum recovery of product, centrifuge the original vial after thawing and prior to removing the cap. Aliquot to avoid repeated freezing and thawing. Aliquot will be stable at 4°C for 3 months.

Images



P-peptide - +

Immunohistochemistry analysis of paraffin-embedded human brain tissue using EPHA3/4/5 (Phospho-Tyr779/833) antibody.



EPHA3/4/5 (Phospho-Tyr779/833) antibody reacts with epitope-specific phosphopeptide and corresponding non-phosphopeptide. The absorbance readings at 450 nM are shown in the ELISA figure.

Related Products

- PW001: Super ECL Assay kit
- E030120 : HRP, Goat Anti-Rabbit IgG(H+L)
- E030220 : AP, Goat Anti-Rabbit IgG(H+L)
- E021010: Anti-GAPDH Mouse Monoclonal Antibody
- E021020: Anti-beta Actin Mouse Monoclonal Antibody
- E022330: Anti-His Tag Mouse Monoclonal Antibody-HRP