

Anti-IKK- γ (Phospho-Ser376) Antibody



<u>Catalog No.</u>	<u>Size</u>
A100242-01	50 μ l
A100242-02	100 μ l

Specificity	Anti- IKK- γ (Phospho-Ser376) (human)
Source	Rabbit Polyclonal
Application	IHC ELISA
Form	Liquid, 1 mg/ml

Product

Swiss-Prot No.: Q9Y6K9

Other Names: FIP-3; FIP3; I-kappa-B kinase gamma; I κ B kinase gamma subunit; I κ B kinase-associated protein 1; IKBK γ ; IKK-gamma; IKKAP1; IKK γ ; Inhibitor of nuclear factor kappa-B kinase gamma subunit; mFIP-3; NEMO; NF-kappaB essential modifier; NF-kappaB essential modulator

Specificity and Sensitivity

IKK- γ (Phospho-Ser376) antibody detects endogenous levels of IKK- γ only when phosphorylated at serine 376.

Source and Purification

The antiserum was produced against synthesized phosphopeptide derived from human IKK- γ around the phosphorylation site of serine 376 (Y-L-SP-S-P).

The antibody was affinity-purified by affinity-chromatography using epitope-specific immunogen.

Application Notes

Optimal working dilutions should be determined experimentally by the investigator. Suggested starting dilutions are as follows:

IHC 1:50~1:100 ELISA 1:1000

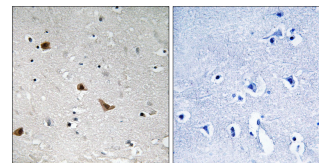
Storage Buffer

Rabbit IgG in phosphate buffered saline (without Mg²⁺ and Ca²⁺), pH 7.4, 150mM NaCl, 0.02% sodium azide and 50% glycerol.

Storage Instructions

Stable for 1 year at -20°C from date of shipment. For maximum recovery of product, centrifuge the original vial after thawing and prior to removing the cap. Aliquot to avoid repeated freezing and thawing. Aliquot will be stable at 4°C for 3 months.

Images



P-peptide

-

+

Immunohistochemistry analysis of paraffin-embedded human brain tissue using IKK- γ (Phospho-Ser376) antibody.

Related Products

PW001: Super ECL Assay kit

E030120 : HRP, Goat Anti-Rabbit IgG(H+L)

E030220 : AP, Goat Anti-Rabbit IgG(H+L)

E021010: Anti-GAPDH Mouse Monoclonal Antibody

E021020: Anti-beta Actin Mouse Monoclonal Antibody

E022330: Anti-His Tag Mouse Monoclonal Antibody-HRP