

Anti- MAP3K7 (Phospho-Ser439) Polyclonal Antibody



Catalog No.	Size
A100251-01	50 µl
A100251-02	100 µl

Specificity	Anti- MAP3K7 (Phospho-Ser439) (human mouse rat)
Source	Rabbit Polyclonal
Application	WB ELISA IHC
Form	Liquid, 1 mg/ml

Product

Swiss-Prot No.: O43318

Other Names: Mitogen-activated protein kinase kinase kinase 7; EC=2.7.11.25; MAP3K7; TAK1

Specificity and Sensitivity

MAP3K7 (Phospho-Ser439) antibody detects endogenous levels of MAP3K7 only when phosphorylated at serine 439.

Source and Purification

The antiserum was produced against synthesized phosphopeptide derived from human Stathmin around the phosphorylation site of serine 439 (R-R-S^P-I-Q).

The antibody was affinity-purified from rabbit antiserum by affinity-chromatography using epitope-specific immunogen.

Application Notes

Optimal working dilutions should be determined experimentally by the investigator. Suggested starting dilutions are as follows:

WB: 1:500~1:3000 IHC: 1:50~1:100 ELISA: 1:1000

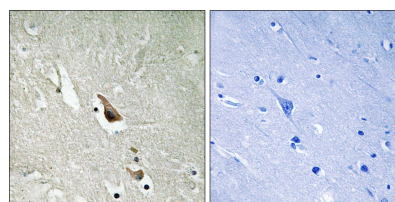
Storage Buffer

Rabbit IgG in phosphate buffered saline (without Mg²⁺ and Ca²⁺), pH 7.4, 150mM NaCl, 0.02% sodium azide and 50% glycerol.

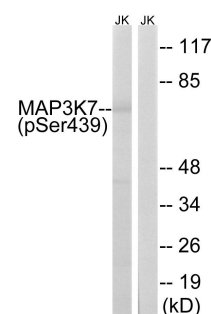
Storage Instructions

Stable for 1 year at -20°C from date of shipment. For maximum recovery of product, centrifuge the original vial after thawing and prior to removing the cap. Aliquot to avoid repeated freezing and thawing. Aliquot will be stable at 4°C for 3 months.

Images



Immunohistochemistry analysis of paraffin-embedded human brain tissue using MAP3K7 (Phospho-Ser439) antibody.



PMA + +
P-peptide - +

Western blot analysis of extracts from Jurkat cells, treated with PMA (125ng/ml, 30mins), using MAP3K7 (Phospho-Ser439) antibody.