

Anti- MSK1 (Phospho-Ser212) Polyclonal Antibody



<u>Catalog No.</u>	<u>Size</u>
A100260-01	50 µl
A100260-02	100 µl

Specificity	Anti- MSK1 (Phospho-Ser212) (human mouse)
Source	Rabbit Polyclonal
Application	WB ELISA IHC
Form	Liquid, 1 mg/ml

Product

Swiss-Prot No.: O75582

Other Names: 90 kDa ribosomal protein S6 kinase, polypeptide 5; EC 2.7.11.1; kinase MSK1; KS6A5; MSPK1; Nuclear mitogen- and stress-activated protein kinase-1; ribosomal protein S6 kinase, polypeptide V; RLPK; RPS6KA5

Specificity and Sensitivity

MSK1 (Phospho-Ser212) antibody detects endogenous levels of MSK1 only when phosphorylated at serine 212.

Source and Purification

The antiserum was produced against synthesized phosphopeptide derived from human MSK1 around the phosphorylation site of serine 212 (A-Y-S^P-F-C). The antibody was affinity-purified from rabbit antiserum by affinity-chromatography using epitope-specific immunogen.

Application Notes

Optimal working dilutions should be determined experimentally by the investigator. Suggested starting dilutions are as follows:

WB: 1:500~1:3000 IHC: 1:50~1:100 ELISA: 1:40000

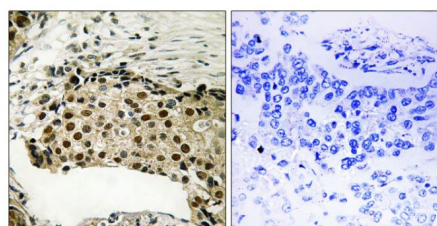
Storage Buffer

Rabbit IgG in phosphate buffered saline (without Mg²⁺ and Ca²⁺), pH 7.4, 150mM NaCl, 0.02% sodium azide and 50% glycerol.

Storage Instructions

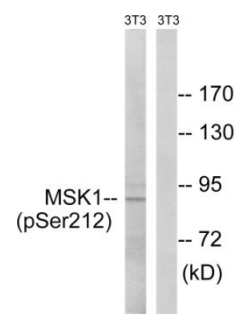
Stable for 1 year at -20°C from date of shipment. For maximum recovery of product, centrifuge the original vial after thawing and prior to removing the cap. Aliquot to avoid repeated freezing and thawing. Aliquot will be stable at 4°C for 3 months.

Images



P-peptide - +

Immunohistochemistry analysis of paraffin-embedded human breast carcinoma tissue using MSK1 (Phospho-Ser212) antibody.



EGF + +

P-peptide - +

Western blot analysis of extracts from 3T3 cells, treated with EGF (200ng/ml, 5mins), using MSK1 (Phospho-Ser212) antibody.