

Anti-PAK1 (Phospho-Ser204) Polyclonal Antibody



| Catalog No. | Size |
|-------------|--------|
| A100264-01 | 50 µl |
| A100264-02 | 100 µl |

| | |
|--------------------|--|
| Specificity | Anti-PAK1 (Phospho-Ser204) (human mouse rat) |
| Source | Rabbit Polyclonal |
| Application | WB ELISA IHC |
| Form | Liquid, 1 mg/ml |

Product

Swiss-Prot No.: Q13153

Other Names: ADRB2; alpha-PAK; CDC42/RAC effector kinase PAK-A; EC 2.7.11.1; kinase PAK1; p21-activated kinase 1; P65-PAK; P68-PAK; PAK 1; PAK-1; PAKA; protein kinase MUK2

Specificity and Sensitivity

PAK1 (Phospho-Ser204) antibody detects endogenous levels of PAK1 only when phosphorylated at serine 204.

Source and Purification

The antiserum was produced against synthesized phosphopeptide derived from human PAK1 around the phosphorylation site of serine 204 (T-R-S^P-V-I).

The antibody was affinity-purified from rabbit antiserum by affinity-chromatography using epitope-specific immunogen.

Application Notes

Optimal working dilutions should be determined experimentally by the investigator. Suggested starting dilutions are as follows:

WB: 1:500~1:3000 IHC: 1:50~1:100 ELISA: 1:1000

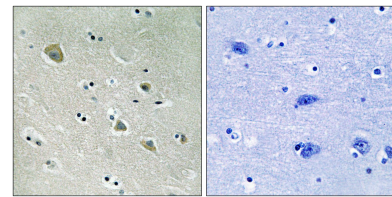
Storage Buffer

Rabbit IgG in phosphate buffered saline (without Mg²⁺ and Ca²⁺), pH 7.4, 150mM NaCl, 0.02% sodium azide and 50% glycerol.

Storage Instructions

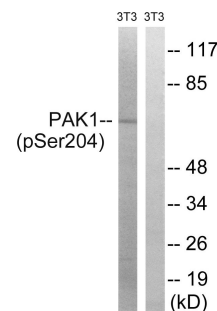
Stable for 1 year at -20°C from date of shipment. For maximum recovery of product, centrifuge the original vial after thawing and prior to removing the cap. Aliquot to avoid repeated freezing and thawing. Aliquot will be stable at 4°C for 3 months.

Images



P-peptide - +

Immunohistochemistry analysis of paraffin-embedded human brain tissue using PAK1 (Phospho-Ser204) antibody.



UV + +
P-peptide - +

Western blot analysis of extracts from 3T3 cells, treated with UV (15mins), using PAK1 (Phospho-Ser204) antibody.