

# Anti- TOP2A (Phospho-Thr1343) Polyclonal Antibody



<u>Catalog No.</u>	<u>Size</u>
A100292-01	50 µl
A100292-02	100 µl

<b>Specificity</b>	Anti- TOP2A (Phospho-Thr1343) (human)
<b>Source</b>	Rabbit Polyclonal
<b>Application</b>	WB ELISA
<b>Form</b>	Liquid, 1 mg/ml

## Product

**Swiss-Prot No.:** P11388

**Other Names:** alpha isozyme; DNA topoisomerase II; DNA topoisomerase II-alpha; EC 5.99.1.3; P11388-1; TOP-2; TOP2; TOP2A; TP2A

## Specificity and Sensitivity

TOP2A (Phospho-Thr1343) antibody detects endogenous levels of TOP2A only when phosphorylated at threonine 1343.

## Source and Purification

The antiserum was produced against synthesized phosphopeptide derived from human TOP2A around the phosphorylation site of threonine 1343 (E-K-T<sup>P</sup>-D-D). The antibody was affinity-purified from rabbit antiserum by affinity-chromatography using epitope-specific immunogen.

## Application Notes

Optimal working dilutions should be determined experimentally by the investigator. Suggested starting dilutions are as follows:

WB: 1:500~1:3000      ELISA: 1:5000

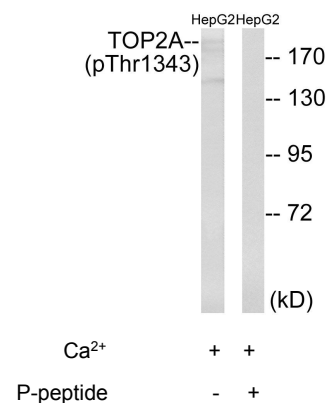
## Storage Buffer

Rabbit IgG in phosphate buffered saline (without Mg<sup>2+</sup> and Ca<sup>2+</sup>), pH 7.4, 150mM NaCl, 0.02% sodium azide and 50% glycerol.

## Storage Instructions

Stable for 1 year at -20°C from date of shipment. For maximum recovery of product, centrifuge the original vial after thawing and prior to removing the cap. Aliquot to avoid repeated freezing and thawing. Aliquot will be stable at 4°C for 3 months.

## Images



Western blot analysis of extracts from HepG2 cells, treated with Ca<sup>2+</sup> (40nM, 30mins), using TOP2A (Phospho-Thr1343) antibody.