

# Anti- Inos (Phospho-Tyr151) Polyclonal Antibody



<u>Catalog No.</u>	<u>Size</u>
A100297-01	50 µl
A100297-02	100 µl

<b>Specificity</b>	Anti- Inos (Phospho-Tyr151) (human mouse rat)
<b>Source</b>	Rabbit Polyclonal
<b>Application</b>	ELISA IHC
<b>Form</b>	Liquid, 1 mg/ml

## Product

**Swiss-Prot No.:** P35228

**Other Names:** EC 1.14.13.39; HEP-NOS; hepatocyte NOS; inducible NOS; nitric oxide synthase, inducible; NOS type II; NOS2; NOS2A

## Specificity and Sensitivity

Inos (Phospho-Tyr151) antibody detects endogenous levels of Inos only when phosphorylated at tyrosine 151.

## Source and Purification

The antiserum was produced against synthesized phosphopeptide derived from human Inos around the phosphorylation site of tyrosine 151 (Q-Y-Y<sup>P</sup>-G-S). The antibody was affinity-purified from rabbit antiserum by affinity-chromatography using epitope-specific immunogen.

## Application Notes

Optimal working dilutions should be determined experimentally by the investigator. Suggested starting dilutions are as follows:

IHC: 1:50~1:100    ELISA: 1:10000

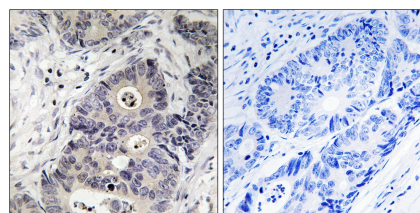
## Storage Buffer

Rabbit IgG in phosphate buffered saline (without Mg<sup>2+</sup> and Ca<sup>2+</sup>), pH 7.4, 150mM NaCl, 0.02% sodium azide and 50% glycerol.

## Storage Instructions

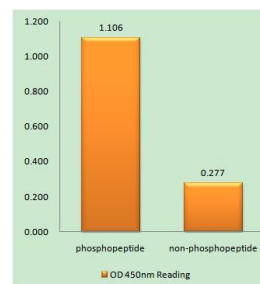
Stable for 1 year at -20°C from date of shipment. For maximum recovery of product, centrifuge the original vial after thawing and prior to removing the cap. Aliquot to avoid repeated freezing and thawing. Aliquot will be stable at 4°C for 3 months.

## Images



P-peptide                      -                      +

Immunohistochemistry analysis of paraffin-embedded human colon carcinoma tissue, using Inos (Phospho-Tyr151) antibody.



Inos (Phospho-Tyr151) antibody reacts with epitope-specific phosphopeptide and corresponding non-phosphopeptide. The absorbance readings at 450 nM are shown in the ELISA figure.