

# Anti-Connexin 43 (Phospho-Ser265) Polyclonal Antibody



<u>Catalog No.</u>	<u>Size</u>
A100298-01	50 µl
A100298-02	100 µl

<b>Specificity</b>	Anti- Connexin 43 (Phospho-Ser265) (human mouse rat)
<b>Source</b>	Rabbit Polyclonal
<b>Application</b>	WB ELISA
<b>Form</b>	Liquid, 1 mg/ml

## Product

**Swiss-Prot No.:** P17302

**Other Names:** CX43, CXA1, CXN-43, GJA1, Gap junction 43 kDa heart protein, Gap junction alpha-1 protein

## Specificity and Sensitivity

Connexin 43 antibody detects endogenous levels of Connexin 43 only when phosphorylated at Serine 265.

## Source and Purification

The antiserum was produced against synthesized phosphopeptide derived from human Connexin 43 around the phosphorylation site of Serine 265.

The antibody was affinity-purified from rabbit antiserum by affinity-chromatography using epitope-specific immunogen.

## Application Notes

Optimal working dilutions should be determined experimentally by the investigator. Suggested starting dilutions are as follows:

WB: 1:500~1:3000                      ELISA: 1:10000

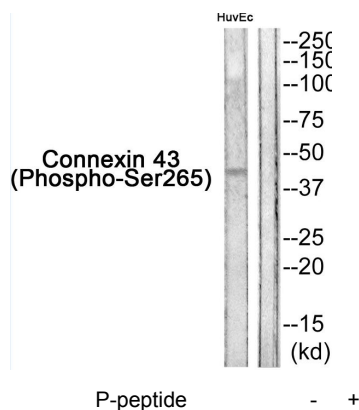
## Storage Buffer

Rabbit IgG in phosphate buffered saline (without Mg<sup>2+</sup> and Ca<sup>2+</sup>), pH 7.4, 150mM NaCl, 0.02% sodium azide and 50% glycerol.

## Storage Instructions

Stable for 1 year at -20°C from date of shipment. For maximum recovery of product, centrifuge the original vial after thawing and prior to removing the cap. Aliquot to avoid repeated freezing and thawing. Aliquot will be stable at 4°C for 3 months.

## Images



Western blot analysis of extracts from HuvEc cells, using Connexin 43 (Phospho-Ser265) Antibody.