

Anti- HP1 γ (Phospho-Ser93) Polyclonal Antibody



<u>Catalog No.</u>	<u>Size</u>
A100299-01	50 μ l
A100299-02	100 μ l

Specificity	Anti- HP1 γ (Phospho-Ser93) (human mouse rat)
Source	Rabbit Polyclonal
Application	WB ELISA
Form	Liquid, 1 mg/ml

Product

Swiss-Prot No.: Q13185

Other Names: chromobox 3; chromobox 3 (HP1 gamma); HECH; heterochromatin protein 1 gamma; heterochromatin protein HP1 gamma; heterochromatin-like protein 1; HP1 gamma; HP1 gamma homolog; HP1-GAMMA; HP1Hs-gamma; modifier 2 protein

Specificity and Sensitivity

HP1 γ (Phospho-Ser93) antibody detects endogenous levels of HP1 γ only when phosphorylated at serine 93.

Source and Purification

The antiserum was produced against synthesized phosphopeptide derived from human HP1 γ around the phosphorylation site of serine 93 (R-K-S^P-L-S).

The antibody was affinity-purified from rabbit antiserum by affinity-chromatography using epitope-specific immunogen.

Application Notes

Optimal working dilutions should be determined experimentally by the investigator. Suggested starting dilutions are as follows:

WB: 1:500~1:3000 ELISA: 1:10000

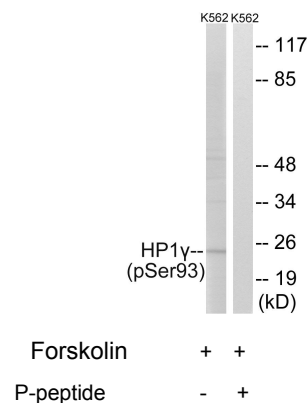
Storage Buffer

Rabbit IgG in phosphate buffered saline (without Mg²⁺ and Ca²⁺), pH 7.4, 150mM NaCl, 0.02% sodium azide and 50% glycerol.

Storage Instructions

Stable for 1 year at -20°C from date of shipment. For maximum recovery of product, centrifuge the original vial after thawing and prior to removing the cap. Aliquot to avoid repeated freezing and thawing. Aliquot will be stable at 4°C for 3 months.

Images



Western blot analysis of extracts from K562 cells, treated with forskolin (40nM, 30mins), using HP1 γ (Phospho-Ser93) antibody.