

Anti-Histone H2A (Phospho-Thr121) Polyclonal Antibody



<u>Catalog No.</u>	<u>Size</u>
A100306-01	50 µl
A100306-02	100 µl

Specificity	Anti- Histone H2A (Phospho-Thr121) (human mouse rat)
Source	Rabbit Polyclonal
Application	ELISA IHC
Form	Liquid, 1 mg/ml

Product

Swiss-Prot No.:

P0C0S8/P04908/P20671/Q96KK5/Q6FI13/Q7L7L0

Other Names: H2A.1b; H2A/c; H2A/d; H2A/i; H2A/n; H2A/p; H2A1; H2AC; H2AFC; H2AFD ANDHIST1H2AL; H2AFI; H2AFN ANDHIST1H2AG; H2AFP; HIST1H2AI; HIST1H2AJ; HIST1H2AM; Histone H2A.c/d/i/n/p

Specificity and Sensitivity

Histone H2A (Phospho-Thr121) antibody detects endogenous levels of Histone H2A only when phosphorylated at threonine 121.

Source and Purification

The antiserum was produced against synthesized phosphopeptide derived from human Histone H2A around the phosphorylation site of threonine 121 (K-K-T^P-E-S). The antibody was affinity-purified from rabbit antiserum by affinity-chromatography using epitope-specific immunogen.

Application Notes

Optimal working dilutions should be determined experimentally by the investigator. Suggested starting dilutions are as follows:

IHC: 1:50~1:100 ELISA: 1:1000

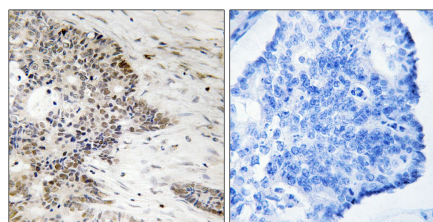
Storage Buffer

Rabbit IgG in phosphate buffered saline (without Mg²⁺ and Ca²⁺), pH 7.4, 150mM NaCl, 0.02% sodium azide and 50% glycerol.

Storage Instructions

Stable for 1 year at -20°C from date of shipment. For maximum recovery of product, centrifuge the original vial after thawing and prior to removing the cap. Aliquot to avoid repeated freezing and thawing. Aliquot will be stable at 4°C for 3 months.

Images



P-peptide - +

Immunohistochemistry analysis of paraffin-embedded human colon carcinoma tissue using Histone H2A (Phospho-Thr121) antibody.