

# Anti-Cyclin D2 (Phospho-Thr280) Polyclonal Antibody



<u>Catalog No.</u>	<u>Size</u>
A100339-01	50 µl
A100339-02	100 µl

<b>Specificity</b>	Anti- Cyclin D2 (Phospho-Thr280) (human mouse rat)
<b>Source</b>	Rabbit Polyclonal
<b>Application</b>	WB ELISA
<b>Form</b>	Liquid, 1 mg/ml

## Product

**Swiss-Prot No.:** P30279

**Other Names:** cyclin D2; G1/S-specific cyclin D2

## Specificity and Sensitivity

Cyclin D2 (Phospho-Thr280) antibody detects endogenous levels of Cyclin D2 only when phosphorylated at threonine 280.

## Source and Purification

The antiserum was produced against synthesized phosphopeptide derived from human Cyclin D2 around the phosphorylation site of threonine 280 (A-S-T<sup>P</sup>-P-T).

The antibody was affinity-purified from rabbit antiserum by affinity-chromatography using epitope-specific immunogen.

## Application Notes

Optimal working dilutions should be determined experimentally by the investigator. Suggested starting dilutions are as follows:

WB: 1:500~1:3000      ELISA: 1:1000

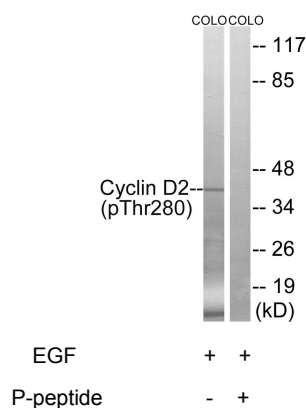
## Storage Buffer

Rabbit IgG in phosphate buffered saline (without Mg<sup>2+</sup> and Ca<sup>2+</sup>), pH 7.4, 150mM NaCl, 0.02% sodium azide and 50% glycerol.

## Storage Instructions

Stable for 1 year at -20°C from date of shipment. For maximum recovery of product, centrifuge the original vial after thawing and prior to removing the cap. Aliquot to avoid repeated freezing and thawing. Aliquot will be stable at 4°C for 3 months.

## Images



Western blot analysis of extracts from COLO cells, treated with EGF (200ng/ml, 30mins), using Cyclin D2 (Phospho-Thr280) antibody.