

# Anti- EPS15 (Phospho-Tyr849) Polyclonal Antibody



<u>Catalog No.</u>	<u>Size</u>
A100342-01	50 µl
A100342-02	100 µl

<b>Specificity</b>	Anti- EPS15 (Phospho-Tyr849) (human mouse rat)
<b>Source</b>	Rabbit Polyclonal
<b>Application</b>	WB ELISA
<b>Form</b>	Liquid, 1 mg/ml

## Product

**Swiss-Prot No.:** P42566

**Other Names:** AF-1P; AF1P; ALL1 fused gene from chromosome 1; epidermal growth factor receptor pathway substrate 15; Epidermal growth factor receptor substrate 15; EPS15; MLLT5; Protein AF-1p; Protein Eps15

## Specificity and Sensitivity

EPS15 (Phospho-Tyr849) antibody detects endogenous levels of EPS15 only when phosphorylated at tyrosine 849.

## Source and Purification

The antiserum was produced against synthesized phosphopeptide derived from human EPS15 around the phosphorylation site of tyrosine 849.

The antibody was affinity-purified from rabbit antiserum by affinity-chromatography using epitope-specific immunogen.

## Application Notes

Optimal working dilutions should be determined experimentally by the investigator. Suggested starting dilutions are as follows:

WB: 1:500~1:3000    ELISA: 1:5000

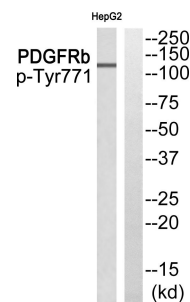
## Storage Buffer

Rabbit IgG in phosphate buffered saline (without Mg<sup>2+</sup> and Ca<sup>2+</sup>), pH 7.4, 150mM NaCl, 0.02% sodium azide and 50% glycerol.

## Storage Instructions

Stable for 1 year at -20°C from date of shipment. For maximum recovery of product, centrifuge the original vial after thawing and prior to removing the cap. Aliquot to avoid repeated freezing and thawing. Aliquot will be stable at 4°C for 3 months.

## Images



Western blot analysis of extracts from HepG2 cells, using EPS15 (Phospho-Tyr849) antibody.