

Anti- Estrogen Receptor- α (Phospho-Ser102) Polyclonal



Antibody

<u>Catalog No.</u>	<u>Size</u>
A100343-01	50 μ l
A100343-02	100 μ l

Specificity	Anti- Estrogen Receptor- α (Phospho-Ser102) (human mouse rat)
Source	Rabbit Polyclonal
Application	ELISA IHC
Form	Liquid, 1 mg/ml

Product

Swiss-Prot No.: P03372

Other Names: ER; ESR; ESR1; ESTR; ESTRA; Estradiol receptor; Estrogen receptor; NR3A1

Specificity and Sensitivity

Estrogen Receptor- α (Phospho-Ser102) antibody detects endogenous levels of Estrogen Receptor- α only when phosphorylated at serine 102.

Source and Purification

The antiserum was produced against synthesized phosphopeptide derived from human Estrogen Receptor- α around the phosphorylation site of serine 102 (L-N-S^P-V-S). The antibody was affinity-purified from rabbit antiserum by affinity-chromatography using epitope-specific immunogen.

Application Notes

Optimal working dilutions should be determined experimentally by the investigator. Suggested starting dilutions are as follows:

IHC: 1:50~1:100 ELISA: 1:1000

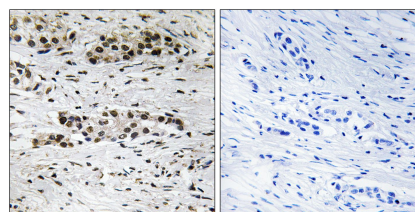
Storage Buffer

Rabbit IgG in phosphate buffered saline (without Mg²⁺ and Ca²⁺), pH 7.4, 150mM NaCl, 0.02% sodium azide and 50% glycerol.

Storage Instructions

Stable for 1 year at -20°C from date of shipment. For maximum recovery of product, centrifuge the original vial after thawing and prior to removing the cap. Aliquot to avoid repeated freezing and thawing. Aliquot will be stable at 4°C for 3 months.

Images



P-peptide - +

Immunohistochemistry analysis of paraffin-embedded human breast carcinoma tissue, using Estrogen Receptor- α (Phospho-Ser102) antibody.