

# Anti- Gab2 (Phospho-Tyr643) Polyclonal Antibody



<u>Catalog No.</u>	<u>Size</u>
A100345-01	50 µl
A100345-02	100 µl

<b>Specificity</b>	Anti- Gab2 (Phospho-Tyr643) (human mouse rat)
<b>Source</b>	Rabbit Polyclonal
<b>Application</b>	WB ELISA IHC
<b>Form</b>	Liquid, 1 mg/ml

## Product

**Swiss-Prot No.:** Q9UQC2

**Other Names:** GABJ; GRB2-associated binding protein 2; KIAA0571; pp100

## Specificity and Sensitivity

Gab2 (Phospho-Tyr643) antibody detects endogenous levels of Gab2 only when phosphorylated at tyrosine 643.

## Source and Purification

The antiserum was produced against synthesized phosphopeptide derived from human Gab2 around the phosphorylation site of tyrosine 643 (V-D-Y<sup>P</sup>-V-Q).

The antibody was affinity-purified from rabbit antiserum by affinity-chromatography using epitope-specific immunogen.

## Application Notes

Optimal working dilutions should be determined experimentally by the investigator. Suggested starting dilutions are as follows:

WB: 1:500~1:3000    IHC: 1:50~1:100    ELISA: 1:40000

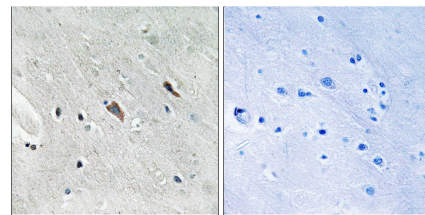
## Storage Buffer

Rabbit IgG in phosphate buffered saline (without Mg<sup>2+</sup> and Ca<sup>2+</sup>), pH 7.4, 150mM NaCl, 0.02% sodium azide and 50% glycerol.

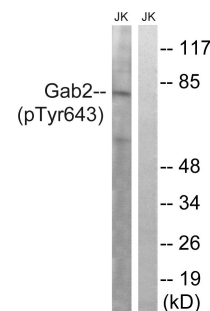
## Storage Instructions

Stable for 1 year at -20°C from date of shipment. For maximum recovery of product, centrifuge the original vial after thawing and prior to removing the cap. Aliquot to avoid repeated freezing and thawing. Aliquot will be stable at 4°C for 3 months.

## Images



P-peptide                    -                    +  
Immunohistochemistry analysis of paraffin-embedded human brain tissue using Gab2 (Phospho-Tyr643) antibody.



IFN                    +                    +  
P-peptide                    -                    +

Western blot analysis of extracts from Jurkat cells, treated with IFN (2500U/ML, 30mins), using Gab2 (Phospho-Tyr643) antibody.