

Anti- MDC1 (Phospho-Ser513) Polyclonal Antibody



<u>Catalog No.</u>	<u>Size</u>
A100352-01	50 µl
A100352-02	100 µl

Specificity	Anti- MDC1 (Phospho-Ser513) (human)
Source	Rabbit Polyclonal
Application	ELISA IHC
Form	Liquid, 1 mg/ml

Product

Swiss-Prot No.: Q14676

Other Names: DKFZp781A0122; IER3; KIAA0170; mediator of DNA damage checkpoint 1; MGC166888; NFBD1

Specificity and Sensitivity

MDC1 (Phospho-Ser513) antibody detects endogenous levels of MDC1 only when phosphorylated at serine 513.

Source and Purification

The antiserum was produced against synthesized phosphopeptide derived from human MDC1 around the phosphorylation site of serine 513 (L-E-R-S^P-Q).

The antibody was affinity-purified from rabbit antiserum by affinity-chromatography using epitope-specific immunogen.

Application Notes

Optimal working dilutions should be determined experimentally by the investigator. Suggested starting dilutions are as follows:

IHC: 1:50~1:100 ELISA: 1:1000

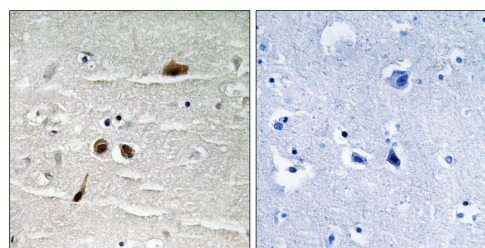
Storage Buffer

Rabbit IgG in phosphate buffered saline (without Mg²⁺ and Ca²⁺), pH 7.4, 150mM NaCl, 0.02% sodium azide and 50% glycerol.

Storage Instructions

Stable for 1 year at -20°C from date of shipment. For maximum recovery of product, centrifuge the original vial after thawing and prior to removing the cap. Aliquot to avoid repeated freezing and thawing. Aliquot will be stable at 4°C for 3 months.

Images



P-peptide - +
Immunohistochemistry analysis of paraffin-embedded human brain tissue using MDC1 (Phospho-Ser513) antibody.