

Anti- NudC (Phospho-Ser326) Polyclonal Antibody



<u>Catalog No.</u>	<u>Size</u>
A100361-01	50 µl
A100361-02	100 µl

Specificity	Anti- NudC (Phospho-Ser326) (human mouse rat)
Source	Rabbit Polyclonal
Application	WB IHC ELISA
Form	Liquid, 1 mg/ml

Product

Swiss-Prot No.: Q9Y266

Other Names: MNUDC protein; Nuclear distribution gene C (A.nidulans) homolog; SIG-92

Specificity and Sensitivity

NudC (Phospho-Ser326) antibody detects endogenous levels of NudC only when phosphorylated at serine 326.

Source and Purification

The antiserum was produced against synthesized phosphopeptide derived from human NudC around the phosphorylation site of serine 326 (D-F-S^P-K-A).

The antibody was affinity-purified from rabbit antiserum by affinity-chromatography using epitope-specific immunogen.

Application Notes

Optimal working dilutions should be determined experimentally by the investigator. Suggested starting dilutions are as follows:

WB: 1:500~1:3000 IHC: 1:50~1:100 ELISA: 1:1000

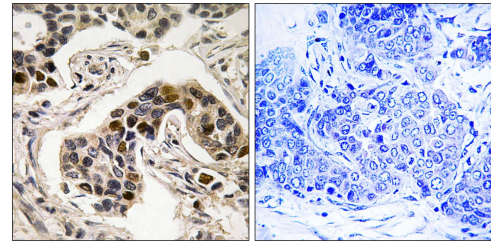
Storage Buffer

Rabbit IgG in phosphate buffered saline (without Mg²⁺ and Ca²⁺), pH 7.4, 150mM NaCl, 0.02% sodium azide and 50% glycerol.

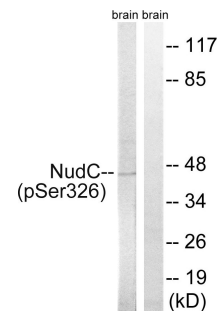
Storage Instructions

Stable for 1 year at -20°C from date of shipment. For maximum recovery of product, centrifuge the original vial after thawing and prior to removing the cap. Aliquot to avoid repeated freezing and thawing. Aliquot will be stable at 4°C for 3 months.

Images



Immunohistochemistry analysis of paraffin-embedded human breast carcinoma tissue using NudC (Phospho-Ser326) antibody.



Western blot analysis of extracts from rat brain cells, using NudC (Phospho-Ser326) antibody.