

# Anti- p47 phox (Phospho-Ser345) Polyclonal Antibody



<u>Catalog No.</u>	<u>Size</u>
A100363-01	50 µl
A100363-02	100 µl

<b>Specificity</b>	Anti- p47 phox (Phospho-Ser345) (human)
<b>Source</b>	Rabbit Polyclonal
<b>Application</b>	WB IHC ELISA
<b>Form</b>	Liquid, 1 mg/ml

## Product

**Swiss-Prot No.:** P14598

**Other Names:** 47 kDa autosomal chronic granulomatous disease protein; 47 kDa neutrophil oxidase factor; NCF-1; NCF-47K; NCF1; Neutrophil cytosol factor 1; Neutrophil cytosolic factor 1; Neutrophil NADPH oxidase factor 1; P47 phox; p47-phox

## Specificity and Sensitivity

p47 phox (Phospho-Ser345) antibody detects endogenous levels of p47 phox only when phosphorylated at serine 345.

## Source and Purification

The antiserum was produced against synthesized phosphopeptide derived from human p47 phox around the phosphorylation site of serine 345 (P-Q-S<sup>P</sup>-P-G).

The antibody was affinity-purified from rabbit antiserum by affinity-chromatography using epitope-specific immunogen.

## Application Notes

Optimal working dilutions should be determined experimentally by the investigator. Suggested starting dilutions are as follows:

WB: 1:500~1:3000 IHC: 1:50~1:100 ELISA: 1:1000

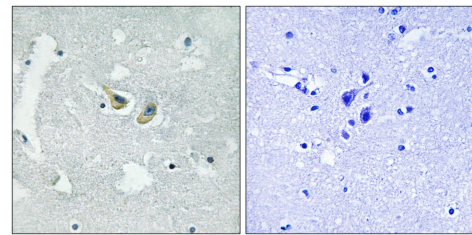
## Storage Buffer

Rabbit IgG in phosphate buffered saline (without Mg<sup>2+</sup> and Ca<sup>2+</sup>), pH 7.4, 150mM NaCl, 0.02% sodium azide and 50% glycerol.

## Storage Instructions

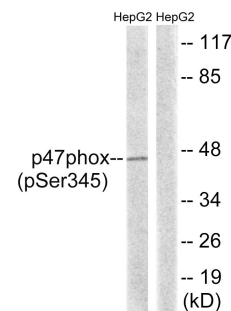
Stable for 1 year at -20°C from date of shipment. For maximum recovery of product, centrifuge the original vial after thawing and prior to removing the cap. Aliquot to avoid repeated freezing and thawing. Aliquot will be stable at 4°C for 3 months.

## Images



P-peptide - +

Immunohistochemistry analysis of paraffin-embedded human brain tissue using p47 phox (Phospho-Ser345) antibody.



TNF + +  
P-peptide - +

Western blot analysis of extracts from HepG2 cells, treated with TNF (20ng/ml, 5mins), using p47 phox (Phospho-Ser345) antibody.