

# Anti- PLD2 (Phospho-Tyr169) Polyclonal Antibody



<u>Catalog No.</u>	<u>Size</u>
A100365-01	50 µl
A100365-02	100 µl

<b>Specificity</b>	Anti- PLD2 (Phospho-Tyr169) (human mouse rat)
<b>Source</b>	Rabbit Polyclonal
<b>Application</b>	WB ELISA IHC
<b>Form</b>	Liquid, 1 mg/ml

## Product

**Swiss-Prot No.:** O14939

**Other Names:** choline phosphatase 2; EC 3.1.4.4; phosphatidylcholine-hydrolyzing phospholipase D2; phospholipase D2; PLD 2; PLD1C

## Specificity and Sensitivity

PLD2 (Phospho-Tyr169) antibody detects endogenous levels of PLD2 only when phosphorylated at tyrosine 169.

## Source and Purification

The antiserum was produced against synthesized phosphopeptide derived from human PLD2 around the phosphorylation site of tyrosine 169 (E-N-Y<sup>P</sup>-L-N). The antibody was affinity-purified from rabbit antiserum by affinity-chromatography using epitope-specific immunogen.

## Application Notes

Optimal working dilutions should be determined experimentally by the investigator. Suggested starting dilutions are as follows:

WB: 1:500~1:3000    IHC: 1:50~1:100    ELISA: 1:10000

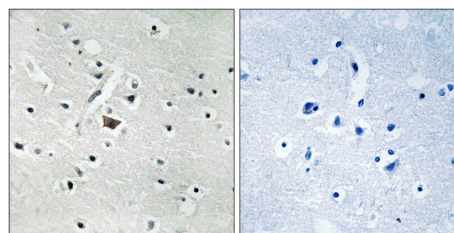
## Storage Buffer

Rabbit IgG in phosphate buffered saline (without Mg<sup>2+</sup> and Ca<sup>2+</sup>), pH 7.4, 150mM NaCl, 0.02% sodium azide and 50% glycerol.

## Storage Instructions

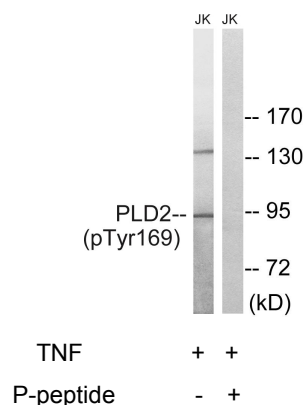
Stable for 1 year at -20°C from date of shipment. For maximum recovery of product, centrifuge the original vial after thawing and prior to removing the cap. Aliquot to avoid repeated freezing and thawing. Aliquot will be stable at 4°C for 3 months.

## Images



P-peptide                      -                      +

Immunohistochemistry analysis of paraffin-embedded human brain tissue using PLD2 (Phospho-Tyr169) antibody.



Western blot analysis of extracts from Jurkat cells, treated with TNF (20ng/ml, 30mins), using PLD2 (Phospho-Tyr169) antibody.