

Anti- RFA2 (Phospho-Ser33) Polyclonal Antibody



<u>Catalog No.</u>	<u>Size</u>
A100368-01	50 µl
A100368-02	100 µl

Specificity	Anti- RFA2 (Phospho-Ser33) (human mouse rat)
Source	Rabbit Polyclonal
Application	WB ELISA
Form	Liquid, 1 mg/ml

Product

Swiss-Prot No.: P15927

Other Names: REPA2; replication factor-A protein 2; replication protein A 32 kDa subunit; replication protein A2; RF-A; RP-A; RPA2; RPA32

Specificity and Sensitivity

RFA2 (Phospho-Ser33) antibody detects endogenous levels of RFA2 only when phosphorylated at serine 33.

Source and Purification

The antiserum was produced against synthesized phosphopeptide derived from human RFA2 around the phosphorylation site of serine 33 (A-P-S^P-Q-A). The antibody was affinity-purified from rabbit antiserum by affinity-chromatography using epitope-specific immunogen.

Application Notes

Optimal working dilutions should be determined experimentally by the investigator. Suggested starting dilutions are as follows:

WB: 1:500~1:3000 ELISA: 1:10000

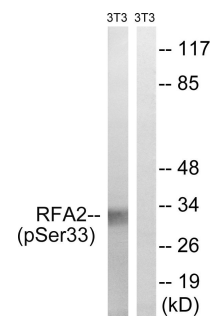
Storage Buffer

Rabbit IgG in phosphate buffered saline (without Mg²⁺ and Ca²⁺), pH 7.4, 150mM NaCl, 0.02% sodium azide and 50% glycerol.

Storage Instructions

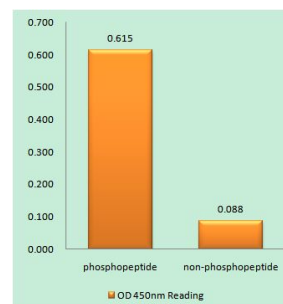
Stable for 1 year at -20°C from date of shipment. For maximum recovery of product, centrifuge the original vial after thawing and prior to removing the cap. Aliquot to avoid repeated freezing and thawing. Aliquot will be stable at 4°C for 3 months.

Images



Adriamycin	+	+
P-peptide	-	+

Western blot analysis of extracts from 3T3 cells, treated with Adriamycin (0.5ug/ml, 24hours), using RFA2 (Phospho-Ser33) antibody.



RFA2 (Phospho-Ser33) antibody reacts with epitope-specific phosphopeptide and corresponding non-phosphopeptide. The absorbance readings at 450 nm are shown in the ELISA figure.