

# Anti- S6 Ribosomal Protein (Phospho-Ser235+Ser236)



## Polyclonal Antibody

Catalog No.	Size
A100370-01	50 µl
A100370-02	100 µl

<b>Specificity</b>	Anti- S6 Ribosomal Protein (Phospho-Ser235+Ser236) (human mouse rat)
<b>Source</b>	Rabbit Polyclonal
<b>Application</b>	WB ELISA IHC
<b>Form</b>	Liquid, 1 mg/ml

### Product

**Swiss-Prot No.:** P62753

**Other Names:** 40S ribosomal protein S6; Phosphoprotein NP33; ribosomal protein S6; RPS6; RS6

### Specificity and Sensitivity

S6 Ribosomal Protein (Phospho-Ser235+Ser236) antibody detects endogenous levels of S6 Ribosomal Protein only when phosphorylated at serine 235&236.

### Source and Purification

The antiserum was produced against synthesized phosphopeptide derived from human S6 Ribosomal Protein around the phosphorylation site of serine 235and 236 (R-L-S<sup>P</sup>-S<sup>P</sup>-L-R).

The antibody was affinity-purified from rabbit antiserum by affinity-chromatography using epitope-specific immunogen.

### Application Notes

Optimal working dilutions should be determined experimentally by the investigator. Suggested starting dilutions are as follows:

WB: 1:500~1:3000    IHC: 1:50~1:100    ELISA: 1:1000

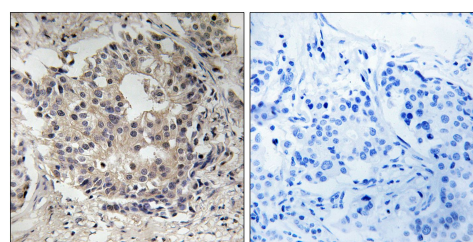
### Storage Buffer

Rabbit IgG in phosphate buffered saline (without Mg<sup>2+</sup> and Ca<sup>2+</sup>), pH 7.4, 150mM NaCl, 0.02% sodium azide and 50% glycerol.

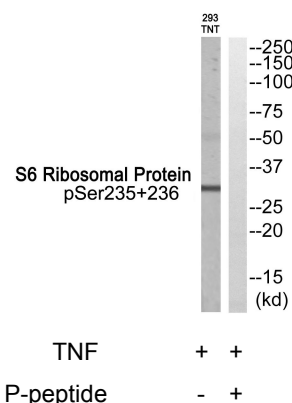
### Storage Instructions

Stable for 1 year at -20°C from date of shipment. For maximum recovery of product, centrifuge the original vial after thawing and prior to removing the cap. Aliquot to avoid repeated freezing and thawing. Aliquot will be stable at 4°C for 3 months.

### Images



P-peptide                    -                    +  
Immunohistochemistry analysis of paraffin-embedded human breast carcinoma tissue using S6 Ribosomal Protein (Phospho-Ser235+Ser236) antibody.



Western blot analysis of extracts from 293 cells treated with TNF, using S6 Ribosomal Protein (Phospho-Ser235+Ser236) antibody.