

Anti- SREBP-1 (Phospho-Ser439) Polyclonal



Antibody

Catalog No.	Size
A100372-01	50 µl
A100372-02	100 µl

Specificity	Anti- SREBP-1 (Phospho-Ser439) (human rat)
Source	Rabbit Polyclonal
Application	WB ELISA IHC
Form	Liquid, 1 mg/ml

Product

Swiss-Prot No.: P36956

Other Names: SRBP1; SREBF1; SREBP1; sterol regulatory element-binding protein 1; sterol regulatory element-binding transcription factor 1

Specificity and Sensitivity

SREBP-1 (Phospho-Ser439) antibody detects endogenous levels of SREBP-1 only when phosphorylated at serine 439.

Source and Purification

The antiserum was produced against synthesized phosphopeptide derived from human SREBP-1 around the phosphorylation site of serine 439 (Q-S-S^P-P-L).

The antibody was affinity-purified from rabbit antiserum by affinity-chromatography using epitope-specific immunogen.

Application Notes

Optimal working dilutions should be determined experimentally by the investigator. Suggested starting dilutions are as follows:

WB: 1:500~1:3000 IHC: 1:50~1:100 ELISA: 1:1000

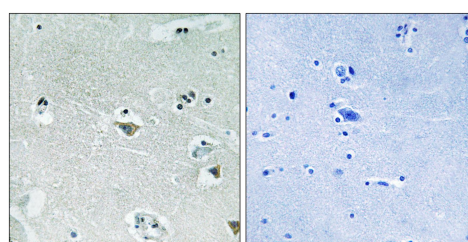
Storage Buffer

Rabbit IgG in phosphate buffered saline (without Mg²⁺ and Ca²⁺), pH 7.4, 150mM NaCl, 0.02% sodium azide and 50% glycerol.

Storage Instructions

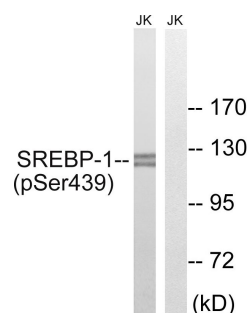
Stable for 1 year at -20°C from date of shipment. For maximum recovery of product, centrifuge the original vial after thawing and prior to removing the cap. Aliquot to avoid repeated freezing and thawing. Aliquot will be stable at 4°C for 3 months.

Images



P-peptide - +

Immunohistochemistry analysis of paraffin-embedded human brain tissue using SREBP-1 (Phospho-Ser439) antibody.



TNF - +
P-peptide - +

Western blot analysis of extracts from Jurkat cells, treated with TNF (20ng/ml, 30mins), using SREBP-1 (Phospho-Ser439) antibody.