

Anti-Tip60 (Phospho-Ser90) Polyclonal Antibody



<u>Catalog No.</u>	<u>Size</u>
A100374-01	50 µl
A100374-02	100 µl

Specificity	Anti-Tip60 (Phospho-Ser90) (human mouse rat)
Source	Rabbit Polyclonal
Application	ELISA IHC
Form	Liquid, 1 mg/ml

Product

Swiss-Prot No.: Q92993

Other Names: 60 kDa Tat interactive protein; cPLA(2)-interacting protein; EC 2.3.1.-; EC 2.3.1.48; histone acetyltransferase HTATIP; HIV-1 Tat interactive protein; HTATIP; Tat-interactive 60 kDa protein alpha isoform; Tat-interactive protein-60; TI60

Specificity and Sensitivity

Tip60 (Phospho-Ser90) antibody detects endogenous levels of Tip60 only when phosphorylated at serine 90.

Source and Purification

The antiserum was produced against synthesized phosphopeptide derived from human Tip60 around the phosphorylation site of serine 90 (P-G-S^P-P-E).

The antibody was affinity-purified from rabbit antiserum by affinity-chromatography using epitope-specific immunogen.

Application Notes

Optimal working dilutions should be determined experimentally by the investigator. Suggested starting dilutions are as follows:

IHC: 1:50~1:100 ELISA: 1:1000

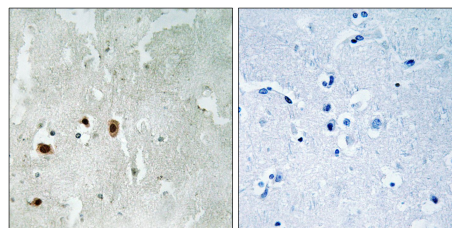
Storage Buffer

Rabbit IgG in phosphate buffered saline (without Mg²⁺ and Ca²⁺), pH 7.4, 150mM NaCl, 0.02% sodium azide and 50% glycerol.

Storage Instructions

Stable for 1 year at -20°C from date of shipment. For maximum recovery of product, centrifuge the original vial after thawing and prior to removing the cap. Aliquot to avoid repeated freezing and thawing. Aliquot will be stable at 4°C for 3 months.

Images



P-peptide - +

Immunohistochemistry analysis of paraffin-embedded human brain tissue using Tip60 (Phospho-Ser90) antibody.