

# Anti- GRIN2B (Phospho-Ser1303) Polyclonal



## Antibody

Catalog No.	Size
A100393-01	50 µl
A100393-02	100 µl

<b>Specificity</b>	Anti- GRIN2B (Phospho-Ser1303) (human mouse rat)
<b>Source</b>	Rabbit Polyclonal
<b>Application</b>	WB ELISA
<b>Form</b>	Liquid, 1 mg/ml

### Product

**Swiss-Prot No.:** Q13224

**Other Names:** Glutamate [NMDA] receptor subunit epsilon 2 precursor; GRIN2B; hNR3; N-methyl D-aspartate receptor subtype 2B; N-methyl-D-aspartate receptor subtype 2B; N-methyl-D-aspartate receptor subunit 3; NMDE2; NME2; NR2B; NR3

### Specificity and Sensitivity

GRIN2B (Phospho-Ser1303) antibody detects endogenous levels of GRIN2B only when phosphorylated at serine 1303.

### Source and Purification

The antiserum was produced against synthesized phosphopeptide derived from human GRIN2B around the phosphorylation site of serine 1303 (Q-H-S<sup>P</sup>-Y-D).

The antibody was affinity-purified from rabbit antiserum by affinity-chromatography using epitope-specific immunogen.

### Application Notes

Optimal working dilutions should be determined experimentally by the investigator. Suggested starting dilutions are as follows:

WB: 1:500~1:3000      ELISA: 1:40000

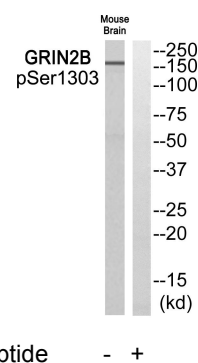
### Storage Buffer

Rabbit IgG in phosphate buffered saline (without Mg<sup>2+</sup> and Ca<sup>2+</sup>), pH 7.4, 150mM NaCl, 0.02% sodium azide and 50% glycerol.

### Storage Instructions

Stable for 1 year at -20°C from date of shipment. For maximum recovery of product, centrifuge the original vial after thawing and prior to removing the cap. Aliquot to avoid repeated freezing and thawing. Aliquot will be stable at 4°C for 3 months.

### Images



Western blot analysis of extracts from Mouse brain cells, using GRIN2B (Phospho-Ser1303) antibody.