

# Anti- C-RAF (Phospho-Ser642) Polyclonal Antibody



<u>Catalog No.</u>	<u>Size</u>
A100399-01	50 µl
A100399-02	100 µl

<b>Specificity</b>	Anti- C-RAF (Phospho-Ser642) (human mouse rat)
<b>Source</b>	Rabbit Polyclonal
<b>Application</b>	WB ELISA
<b>Form</b>	Liquid, 1 mg/ml

## Product

**Swiss-Prot No.:** P04049

**Other Names:** C-RAF; C-Raf; CRAF; kinase Raf1; Protein kinase raf 1; RAF proto-oncogene serine/threonine-protein kinase; Raf proto-oncogene serine/threonine-protein kinase; RAF-1; Raf-1; RAF1; Similar to murine leukemia viral (V-raf-1) oncogene homolog 1

## Specificity and Sensitivity

C-RAF (Phospho-Ser642) antibody detects endogenous levels of C-RAF only when phosphorylated at serine 642.

## Source and Purification

The antiserum was produced against synthesized phosphopeptide derived from human C-RAF around the phosphorylation site of serine 642 (T-T-S<sup>P</sup>-P-R).

The antibody was affinity-purified from rabbit antiserum by affinity-chromatography using epitope-specific immunogen.

## Application Notes

Optimal working dilutions should be determined experimentally by the investigator. Suggested starting dilutions are as follows:

WB: 1:500~1:3000      ELISA: 1:40000

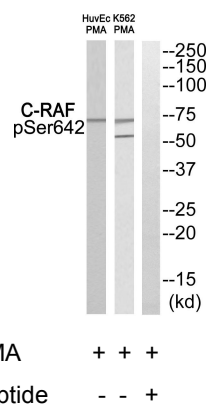
## Storage Buffer

Rabbit IgG in phosphate buffered saline (without Mg<sup>2+</sup> and Ca<sup>2+</sup>), pH 7.4, 150mM NaCl, 0.02% sodium azide and 50% glycerol.

## Storage Instructions

Stable for 1 year at -20°C from date of shipment. For maximum recovery of product, centrifuge the original vial after thawing and prior to removing the cap. Aliquot to avoid repeated freezing and thawing. Aliquot will be stable at 4°C for 3 months.

## Images



Western blot analysis of extracts from HuvEc cells and K562 cells treated with PMA, using C-RAF (Phospho-Ser642) antibody.