

Anti- ATF-4 (Phospho-Ser219) Polyclonal Antibody



| <u>Catalog No.</u> | <u>Size</u> |
|--------------------|-------------|
| A100404-01 | 50 µl |
| A100404-02 | 100 µl |

| | |
|--------------------|--|
| Specificity | Anti- ATF-4 (Phospho-Ser219) (human mouse) |
| Source | Rabbit Polyclonal |
| Application | WB ELISA |
| Form | Liquid, 1 mg/ml |

Product

Swiss-Prot No.: P18848

Other Names: Activating transcription factor 4; activating transcription factor 4 (tax-responsive enhancer element B67); ATF4; cAMP response element-binding protein 2; cAMP-dependent transcription factor ATF-4; cAMP-responsive element-binding protein 2; CREB-2; CREB2; Cyclic AMP-dependent transcription factor ATF-4; Cyclic AMP-responsive element-binding protein 2; DNA-binding protein TAXREB67; Tax-responsive enhancer element-binding protein 67; TaxREB67; TXREB

Specificity and Sensitivity

ATF-4 (Phospho-Ser219) Antibody detects endogenous levels of ATF4 only when phosphorylated at serine 219.

Source and Purification

The antiserum was produced against synthesized phosphopeptide derived from human ATF4 around the phosphorylation site of serine 219.

The antibody was affinity-purified from rabbit antiserum by affinity-chromatography using epitope-specific immunogen.

Application Notes

Optimal working dilutions should be determined experimentally by the investigator. Suggested starting dilutions are as follows:

WB: 1:500~1:3000 ELISA: 1:20000

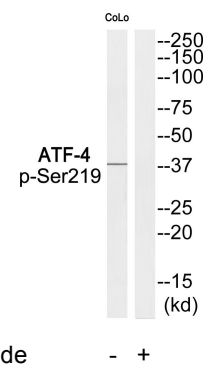
Storage Buffer

Rabbit IgG in phosphate buffered saline (without Mg²⁺ and Ca²⁺), pH 7.4, 150mM NaCl, 0.02% sodium azide and 50% glycerol.

Storage Instructions

Stable for 1 year at -20°C from date of shipment. For maximum recovery of product, centrifuge the original vial after thawing and prior to removing the cap. Aliquot to avoid repeated freezing and thawing. Aliquot will be stable at 4°C for 3 months.

Images



Western blot analysis of extracts from COLO205 cells, using ATF-4 (Phospho-Ser219) Antibody.