

# Anti-p70 S6 Kinase (Phospho-Ser371) Polyclonal Antibody



<u>Catalog No.</u>	<u>Size</u>
A100421-01	50 µl
A100421-02	100 µl

<b>Specificity</b>	Anti-p70 S6 Kinase (Phospho-Ser371) (Human Mouse Rat)
<b>Source</b>	Rabbit Polyclonal
<b>Application</b>	WB ELISA IHC
<b>Form</b>	Liquid, 1 mg/ml

## Product

**Swiss-Prot No.:** P23443

**Other Names:** EC 2.7.11.1, KS6B1, P70-S6K, RPS6KB1, Ribosomal protein S6 kinase, Ribosomal protein S6 kinase, 70kDa, polypeptide 1, S6K, kinase p70S6K, p70-S6K

## Specificity and Sensitivity

p70 S6 Kinase (Phospho-Ser371) antibody detects endogenous levels of p70 S6 Kinase only when phosphorylated at serine 371.

## Source and Purification

The antiserum was produced against synthesized phosphopeptide derived from human p70 S6 Kinase around the phosphorylation site of serine 371 (V-D-S<sup>P</sup>-P-D).

The antibody was affinity-purified from rabbit antiserum by affinity-chromatography using epitope-specific immunogen.

## Application Notes

Optimal working dilutions should be determined experimentally by the investigator. Suggested starting dilutions are as follows:

WB: 1:500~1:3000    IHC: 1:50~1:100

ELISA: 1:20000

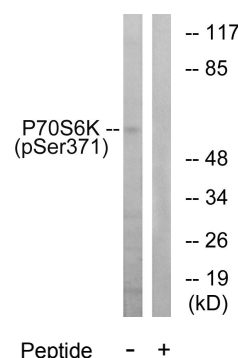
## Storage Buffer

Rabbit IgG in phosphate buffered saline (without Mg<sup>2+</sup> and Ca<sup>2+</sup>), pH 7.4, 150mM NaCl, 0.02% sodium azide and 50% glycerol.

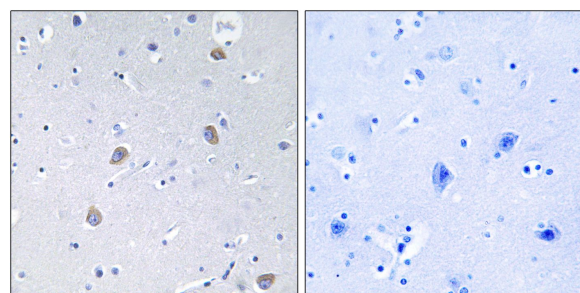
## Storage Instructions

Stable for 1 year at -20°C from date of shipment. For maximum recovery of product, centrifuge the original vial after thawing and prior to removing the cap. Aliquot to avoid repeated freezing and thawing. Aliquot will be stable at 4°C for 3 months.

## Images



Western blot analysis of extracts from colo cells, treated with serum (20%, 15mins), using p70 S6 Kinase (Phospho-Ser371) antibody.



Immunohistochemistry analysis of paraffin-embedded human brain tissue using p70 S6 Kinase (Phospho-Ser371) antibody.