

Anti-p70 S6 Kinase (Phospho-Ser424) Polyclonal Antibody



<u>Catalog No.</u>	<u>Size</u>
A100423-01	50 µl
A100423-02	100 µl

Specificity	Anti-p70 S6 Kinase (Phospho-Ser424) (Human Mouse Rat)
Source	Rabbit Polyclonal
Application	WB ELISA IHC
Form	Liquid, 1 mg/ml

Product

Swiss-Prot No.: P23443

Other Names: Ribosomal protein S6 kinase I; S6K; S6K1; 70 kDa ribosomal protein S6 kinase 1; p70 S6 kinase alpha; p70(S6K)-alpha; p70-S6K; P70S6K; p70-alpha

Specificity and Sensitivity

p70 S6 Kinase (Phospho-Ser424) antibody detects endogenous levels of p70 S6 Kinase only when phosphorylated at serine 424.

Source and Purification

The antiserum was produced against synthesized phosphopeptide derived from human p70 S6 Kinase around the phosphorylation site of serine 424 (P-V-S^P-P-V).

The antibody was affinity-purified from rabbit antiserum by affinity-chromatography using epitope-specific immunogen.

Application Notes

Optimal working dilutions should be determined experimentally by the investigator. Suggested starting dilutions are as follows:

WB: 1:500~1:3000 IHC: 1:50~1:100
ELISA: 1:10000

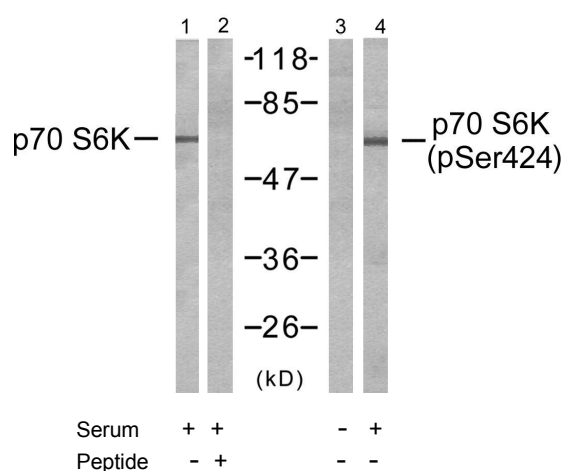
Storage Buffer

Rabbit IgG in phosphate buffered saline (without Mg²⁺ and Ca²⁺), pH 7.4, 150mM NaCl, 0.02% sodium azide and 50% glycerol.

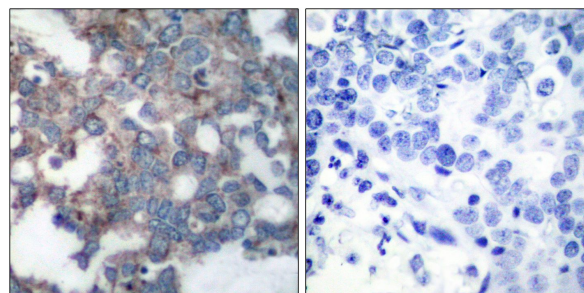
Storage Instructions

Stable for 1 year at -20°C from date of shipment. For maximum recovery of product, centrifuge the original vial after thawing and prior to removing the cap. Aliquot to avoid repeated freezing and thawing. Aliquot will be stable at 4°C for 3 months.

Images



Western blot analysis of extracts from 293 cells, untreated or treated with serum(15%), using p70 S6 Kinase (Ab-424) antibody (Line 1 and 2) and p70 S6 Kinase (Phospho-Ser424) antibody (Line 3 and 4).



Immunohistochemical analysis of paraffin-embedded human breast carcinoma tissue using p70 S6 Kinase (Phospho-Ser424) antibody.