

Anti-Phospho-EPHA2/3(Tyr588/596) Polyclonal Antibody



<u>Catalog No.</u>	<u>Size</u>
A100458-01	50 µl
A100458-02	100 µl

Specificity	Anti- Phospho-EPHA2/3(Tyr588/596) (human mouse rat)
Source	Rabbit Polyclonal
Application	WB IF
Form	Liquid, 1 mg/ml

Product

Swiss-Prot No.: P29317/P29320/P54764

Other Names: ARCC2; ECK; EPH receptorA2; EPHA2; ephrin receptor EphA2; Ephrin type-A receptor 2; Epithelial cell kinase; epithelial cell receptor protein tyrosine kinase; protein tyrosine kinase; soluble EPHA2 variant 1; Tyrosine-protein kinase receptor ECK

Specificity and Sensitivity

Phospho-EPHA2/3(Tyr588/596) Antibody detects endogenous levels of EPHA2 and 3 only when phosphorylated at Tyrosine 588 and 596..

Source and Purification

A synthesized peptide derived from human EPHA2/3 around the phosphorylation site of Tyrosine 588 and 596.

The antibody was affinity-purified from rabbit antiserum by affinity-chromatography using epitope-specific immunogen.

Application Notes

Optimal working dilutions should be determined experimentally by the investigator. Suggested starting dilutions are as follows:

WB: 1:500~1:3000 IF: 1:100-1:500

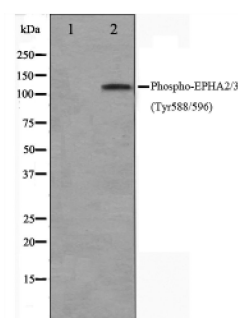
Storage Buffer

Rabbit IgG in phosphate buffered saline (without Mg²⁺ and Ca²⁺), pH 7.4, 150mM NaCl, 0.02% sodium azide and 50% glycerol.

Storage Instructions

Stable for 1 year at -20°C from date of shipment. For maximum recovery of product, centrifuge the original vial after thawing and prior to removing the cap. Aliquot to avoid repeated freezing and thawing. Aliquot will be stable at 4°C for 3 months.

Images



Western blot analysis on HepG2 cell lysate using Phospho-EPHA2/3(Tyr588/596) antibody, The lane on the left is treated with the antigen-specific peptide.

Related Products

PW001: Super ECL Assay kit

E030120 : HRP, Goat Anti-Rabbit IgG(H+L)

E030220 : AP, Goat Anti-Rabbit IgG(H+L)

E021010: Anti-GAPDH Mouse Monoclonal Antibody

E021020: Anti-beta Actin Mouse Monoclonal Antibody

E022330: Anti-His Tag Mouse Monoclonal Antibody-HRP