

# Anti- Phospho-FANCG(Ser383) Polyclonal Antibody



<u>Catalog No.</u>	<u>Size</u>
A100462-01	50 µl
A100462-02	100 µl

<b>Specificity</b>	Anti- Phospho-FANCG(Ser383) (human)
<b>Source</b>	Rabbit Polyclonal
<b>Application</b>	WB
<b>Form</b>	Liquid, 1 mg/ml

## Product

**Swiss-Prot No.:** O15287

**Other Names:** DNA repair protein XRCC9; FAG; FANCG; Fanconi anemia group G protein; Fanconi anemia, complementation group G; Protein FACG; X-ray repair complementing defective repair in Chinese hamster cells 9; X-ray repair, complementing defective, in Chinese hamster,

## Specificity and Sensitivity

Phospho-FANCG(Ser383)Antibody detects endogenous levels of FANCG only when phosphorylated at Sersine 383.

## Source and Purification

A synthesized peptide derived from human FANCG around the phosphorylation site of Sersine 383.

The antibody was affinity-purified from rabbit antiserum by affinity-chromatography using epitope-specific immunogen.

## Application Notes

Optimal working dilutions should be determined experimentally by the investigator. Suggested starting dilutions are as follows:

WB: 1:500~1:3000

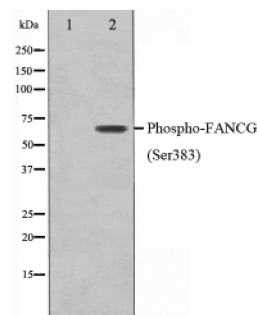
## Storage Buffer

Rabbit IgG in phosphate buffered saline (without Mg<sup>2+</sup> and Ca<sup>2+</sup>), pH 7.4, 150mM NaCl, 0.02% sodium azide and 50% glycerol.

## Storage Instructions

Stable for 1 year at -20°C from date of shipment. For maximum recovery of product, centrifuge the original vial after thawing and prior to removing the cap. Aliquot to avoid repeated freezing and thawing. Aliquot will be stable at 4°C for 3 months.

## Images



Western blot analysis on K562 cell lysate using Phospho-FANCG(Ser383) antibody, The lane on the left is treated with the antigen-specific peptide.

## Related Products

PW001: Super ECL Assay kit

E030120 : HRP, Goat Anti-Rabbit IgG(H+L)

E030220 : AP, Goat Anti-Rabbit IgG(H+L)

E021010: Anti-GAPDH Mouse Monoclonal Antibody

E021020: Anti-beta Actin Mouse Monoclonal Antibody

E022330: Anti-His Tag Mouse Monoclonal Antibody-HRP