

## Anti- Phospho-Calcium Sensing Receptor (Thr888) Polyclonal Antibody



<u>Catalog No.</u>	<u>Size</u>
A100580-01	50 µl
A100580-02	100 µl

<b>Specificity</b>	Anti- Phospho-Calcium Sensing Receptor (Thr888) (human mouse rat)
<b>Source</b>	Rabbit Polyclonal
<b>Application</b>	WB IF/ICC
<b>Form</b>	Liquid, 1 mg/ml

### Product

**Swiss-Prot No.:** P41180

**Other Names:** CASR, CaSR, Extracellular calcium-sensing receptor precursor, GPRC2A, PCAR1, Parathyroid Cell calcium-sensing receptor

### Specificity and Sensitivity

Phospho-Calcium Sensing Receptor (Thr888) Antibody detects endogenous levels of Calcium Sensing Receptor only when phosphorylated at Threonine 888.

### Source and Purification

A synthesized peptide derived from human Calcium Sensing Receptor around the phosphorylation site of Threonine 888. The antibody was affinity-purified from rabbit antiserum by affinity-chromatography using epitope-specific immunogen.

### Application Notes

Optimal working dilutions should be determined experimentally by the investigator. Suggested starting dilutions are as follows:

WB: 1:500~1:3000 IF/ICC: 1:100-1:500

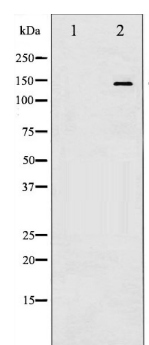
### Storage Buffer

Rabbit IgG in phosphate buffered saline (without  $Mg^{2+}$  and  $Ca^{2+}$ ), pH 7.4, 150mM NaCl, 0.02% sodium azide and 50% glycerol.

### Storage Instructions

Stable for 1 year at -20°C from date of shipment. For maximum recovery of product, centrifuge the original vial after thawing and prior to removing the cap. Aliquot to avoid repeated freezing and thawing. Aliquot will be stable at 4°C for 3 months.

### Images



Western blot analysis of Calcium Sensing Receptor phosphorylation expression in LOVO whole cell lysates, The lane on the left is treated with the antigen-specific peptide.

### Related Products

PW001: Super ECL Assay kit

E030120 : HRP, Goat Anti-Rabbit IgG(H+L)

E030220 : AP, Goat Anti-Rabbit IgG(H+L)

E021010: Anti-GAPDH Mouse Monoclonal Antibody

E021020: Anti-beta Actin Mouse Monoclonal Antibody

E022330: Anti-His Tag Mouse Monoclonal Antibody-HRP