

Anti- Phospho-c-PLA2 (Ser505) Polyclonal Antibody



<u>Catalog No.</u>	<u>Size</u>
A100592-01	50 µl
A100592-02	100 µl

Specificity	Anti- Phospho-c-PLA2 (Ser505) (human mouse rat)
Source	Rabbit Polyclonal
Application	WB IHC IF/ICC
Form	Liquid, 1 mg/ml

Product

Swiss-Prot No.: P47712

Other Names: calcium-dependent phospholipid-binding protein; CPLA2; cPLA2-alpha; Cytosolic phospholipase A2; Lysophospholipase; MGC126350; PA24A; Phosphatidylcholine 2-acylhydrolase; Phospholipase A2; Phospholipase A2 group IVA; phospholipase A2, group IVA (cytosolic, calcium-dependent); PLA2G4; PLA2G4A

Specificity and Sensitivity

Phospho-c-PLA2 (Ser505)Antibody detects endogenous levels of c-PLA2 only when phosphorylated at Serine 505.

Source and Purification

A synthesized peptide derived from human c-PLA2 around the phosphorylation site of Serine 505.

The antibody was affinity-purified from rabbit antiserum by affinity-chromatography using epitope-specific immunogen.

Application Notes

Optimal working dilutions should be determined experimentally by the investigator. Suggested starting dilutions are as follows:

WB: 1:500~1:3000 IHC: 1:50~1:200 IF/ICC: 1:100-1:500

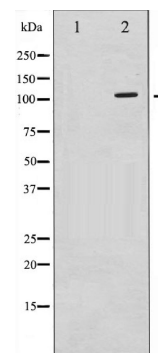
Storage Buffer

Rabbit IgG in phosphate buffered saline (without Mg²⁺ and Ca²⁺), pH 7.4, 150mM NaCl, 0.02% sodium azide and 50% glycerol.

Storage Instructions

Stable for 1 year at -20°C from date of shipment. For maximum recovery of product, centrifuge the original vial after thawing and prior to removing the cap. Aliquot to avoid repeated freezing and thawing. Aliquot will be stable at 4°C for 3 months.

Images



Western blot analysis of c-PLA2 phosphorylation expression in TNF-a treated HeLa whole cell lysates, The lane on the left is treated with the antigen-specific peptide.

Related Products

PW001: Super ECL Assay kit

E030120 : HRP, Goat Anti-Rabbit IgG(H+L)

E030220 : AP, Goat Anti-Rabbit IgG(H+L)

E021010: Anti-GAPDH Mouse Monoclonal Antibody

E021020: Anti-beta Actin Mouse Monoclonal Antibody

E022330: Anti-His Tag Mouse Monoclonal Antibody-HRP