

# Anti- Phospho-DARPP-32 (Thr75) Polyclonal Antibody



<u>Catalog No.</u>	<u>Size</u>
A100635-01	50 µl
A100635-02	100 µl

<b>Specificity</b>	Anti- Phospho-DARPP-32 (Thr75) (human mouse rat)
<b>Source</b>	Rabbit Polyclonal
<b>Application</b>	WB IHC
<b>Form</b>	Liquid, 1 mg/ml

## Product

**Swiss-Prot No.:** Q9UD71

**Other Names:** DARPP-32; DARPP32; dopamine and cAMP regulated phosphoprotein; dopamine and cAMP-regulated neuronal phosphoprotein 32; Dopamine- and cAMP-regulated neuronal phosphoprotein; FLJ20940; PPP1R1B; PPR1B; Protein phosphatase 1 regulatory subunit 1B; protein phosphatase 1, regulatory (inhibitor) subunit 1B; protein phosphatase 1, regulatory (inhibitor) subunit 1B (dopamine and cAMP regulated phosphoprotein, DARPP-32)

## Specificity and Sensitivity

Phospho-DARPP-32 (Thr75)Antibody detects endogenous levels of DARPP-32 only when phosphorylated at Threonine 75.

## Source and Purification

A synthesized peptide derived from human DARPP-32 around the phosphorylation site of Threonine 75. The antibody was affinity-purified from rabbit antiserum by affinity-chromatography using epitope-specific immunogen.

## Application Notes

Optimal working dilutions should be determined experimentally by the investigator. Suggested starting dilutions are as follows:

WB: 1:500~1:3000 IHC: 1:50~1:200

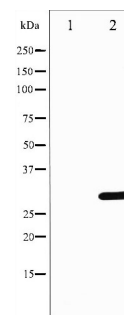
## Storage Buffer

Rabbit IgG in phosphate buffered saline (without Mg<sup>2+</sup> and Ca<sup>2+</sup>), pH 7.4, 150mM NaCl, 0.02% sodium azide and 50% glycerol.

## Storage Instructions

Stable for 1 year at -20°C from date of shipment. For maximum recovery of product, centrifuge the original vial after thawing and prior to removing the cap. Aliquot to avoid repeated freezing and thawing. Aliquot will be stable at 4°C for 3 months.

## Images



Western blot analysis of DARPP-32 phosphorylation expression in Forskolin treated COS7 whole cell lysates, The lane on the left is treated with the antigen-specific peptide.

## Related Products

- PW001: Super ECL Assay kit
- E030120 : HRP, Goat Anti-Rabbit IgG(H+L)
- E030220 : AP, Goat Anti-Rabbit IgG(H+L)
- E021010: Anti-GAPDH Mouse Monoclonal Antibody
- E021020: Anti-beta Actin Mouse Monoclonal Antibody
- E022330: Anti-His Tag Mouse Monoclonal Antibody-HRP