

Anti- Phospho-CaMK2 alpha/ beta/ delta (Thr305)



Polyclonal Antibody

<u>Catalog No.</u>	<u>Size</u>
A100637-01	50 µl
A100637-02	100 µl

Specificity	Anti- Phospho-CaMK2 alpha/ beta/ delta (Thr305) (human mouse rat)
Source	Rabbit Polyclonal
Application	WB IHC
Form	Liquid, 1 mg/ml

Product

Swiss-Prot No.: Q9UQM7/Q13554/Q13557

Other Names: calcium/calmodulin-dependent protein kinase (CaM kinase) II alpha; calcium/calmodulin-dependent protein kinase II alpha; calcium/calmodulin-dependent protein kinase II alpha-B subunit; calcium/calmodulin-dependent protein kinase type II alpha chain; Calcium/calmodulin-dependent protein kinase type II subunit alpha; CaM kinase II alpha subunit; CaM kinase II subunit alpha; CaM-kinase II alpha chain; CaMK-II alpha subunit; CaMK-II subunit alpha; CAMK2A; CAMKA; CaMKII; CaMKIINalpha; KCC2A; KIAA0968

Specificity and Sensitivity

Phospho-CaMK2 alpha/ beta/ delta (Thr305) Antibody detects endogenous levels of CaMK2 alpha/ beta/ delta only when phosphorylated at Threonine 305.

Source and Purification

A synthesized peptide derived from human CaMK2 alpha/ beta/ delta around the phosphorylation site of Threonine 305. The antibody was affinity-purified from rabbit antiserum by affinity-chromatography using epitope-specific immunogen.

Application Notes

Optimal working dilutions should be determined experimentally by the investigator. Suggested starting dilutions are as follows:

WB: 1:500~1:3000 IHC: 1:50~1:200

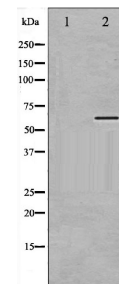
Storage Buffer

Rabbit IgG in phosphate buffered saline (without Mg²⁺ and Ca²⁺), pH 7.4, 150mM NaCl, 0.02% sodium azide and 50% glycerol.

Storage Instructions

Stable for 1 year at -20°C from date of shipment. For maximum recovery of product, centrifuge the original vial after thawing and prior to removing the cap. Aliquot to avoid repeated freezing and thawing. Aliquot will be stable at 4°C for 3 months.

Images



Western blot analysis of CaMK2 alpha/ beta/ delta phosphorylation expression in NIH-3T3 whole cell lysates. The lane on the left is treated with the antigen-specific peptide.

Related Products

- PW001: Super ECL Assay kit
- E030120 : HRP, Goat Anti-Rabbit IgG(H+L)
- E030220 : AP, Goat Anti-Rabbit IgG(H+L)
- E021010: Anti-GAPDH Mouse Monoclonal Antibody
- E021020: Anti-beta Actin Mouse Monoclonal Antibody
- E022330: Anti-His Tag Mouse Monoclonal Antibody-HRP