

Anti-IKK-alpha/beta(Phospho-Ser180/181) Polyclonal Antibody



<u>Catalog No.</u>	<u>Size</u>
A100641-01	50 µl
A100641-02	100 µl

Specificity	Anti- Phospho-IKK- alpha/ beta (Ser180/181) (human mouse rat)
Source	Rabbit Polyclonal
Application	WB IHC
Form	Liquid, 1 mg/ml

Product

Other Names: FLJ40509; I-kappa-B kinase 2; I-kappa-B-kinase beta; IKBKB; IKK-B; IKK-beta; IKK2; IKKB; inhibitor of kappa light polypeptide gene enhancer in B-cells, kinase beta; Inhibitor of nuclear factor kappa-B kinase subunit beta; MGC131801; NFKB1KB; Nuclear factor NF-kappa-B inhibitor kinase beta

Specificity and Sensitivity

Phospho-IKK- alpha/ beta (Ser180/181) Antibody detects endogenous levels of IKKalpha/beta only when phosphorylated at Serine 180/181

Source and Purification

A synthesized peptide derived from human IKK- alpha/ beta around the phosphorylation site of Serine 180/181.

The antibody was affinity-purified from rabbit antiserum by affinity-chromatography using epitope-specific immunogen.

Application Notes

Optimal working dilutions should be determined experimentally by the investigator. Suggested starting dilutions are as follows:

WB 1:500-1:3000 IHC: 1:50~1:200

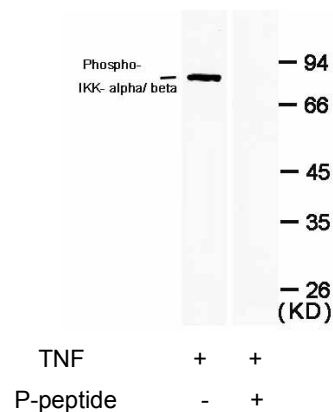
Storage Buffer

Rabbit IgG in phosphate buffered saline (without Mg²⁺ and Ca²⁺), pH 7.4, 150mM NaCl, 0.02% sodium azide and 50% glycerol.

Storage Instructions

Stable for 1 year at -20°C from date of shipment. For maximum recovery of product, centrifuge the original vial after thawing and prior to removing the cap. Aliquot to avoid repeated freezing and thawing. Aliquot will be stable at 4°C for 3 months.

Images



Western blot analysis of IKK- alpha phosphorylation expression in HepG2 whole cells.

Related Products

E030120 : HRP, Goat Anti-Rabbit IgG(H+L)
E032221: Dylight 488, Donkey Anti-Rabbit IgG(H+L)
E021010: Anti-GAPDH Mouse Monoclonal Antibody
E021020: Anti-beta Actin Mouse Monoclonal Antibody
E022330: Anti-His Tag Mouse Monoclonal Antibody-HRP