

Anti- Amyloid β A4 (Ab-743/668) Polyclonal Antibody



<u>Catalog No.</u>	<u>Size</u>
A200002-01	50 μ l
A200002-02	100 μ l

Specificity	Anti- Amyloid β A4 (Ab-743/668) (human mouse rat)
Source	Rabbit Polyclonal
Application	WB IHC IF ELISA
Form	Liquid, 1 mg/ml

Product

Swiss-Prot No.: P05067

Other Names: ADDA, Alpha adducin, Erythrocyte adducin alpha subunit

Specificity and Sensitivity

A4, ABPP, AD1, APP, APPI, Alzheimer's disease amyloid protein, Amyloid beta A4 protein precursor, Beta-amyloid protein 40, Beta-amyloid protein 42, C31, C83, CVAP, Cerebral vascular amyloid peptide, Gamma-CTF(50), Gamma-CTF(57), Gamma-CTF(59), P3(40), P3(42), PN-II, PreA4, Protease nexin-II, Soluble APP-alpha (S-APP- alpha), Soluble APP-beta (S-APP-beta).

Source and Purification

The antiserum was produced against synthesized non-phosphopeptide derived from human Amyloid β A4 around the phosphorylation site of threonine743/668 (A-V-T^P-P-E).

The antibody was affinity-purified from rabbit antiserum by affinity-chromatography using epitope-specific immunogen.

Application Notes

Optimal working dilutions should be determined experimentally by the investigator. Suggested starting dilutions are as follows:

WB: 1:500~1:3000 ELISA: 1:40000
IHC: 1:50~1:100 IF: 1:100~1:500

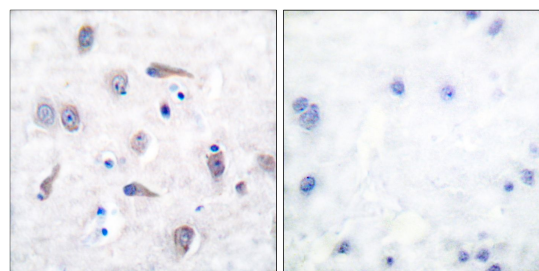
Storage Buffer

Rabbit IgG in phosphate buffered saline (without Mg²⁺ and Ca²⁺), pH 7.4, 150mM NaCl, 0.02% sodium azide and 50% glycerol.

Storage Instructions

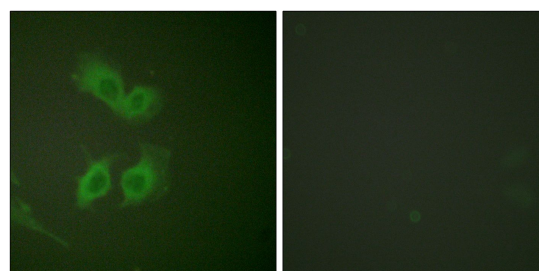
Stable for 1 year at -20°C from date of shipment. For maximum recovery of product, centrifuge the original vial after thawing and prior to removing the cap. Aliquot to avoid repeated freezing and thawing. Aliquot will be stable at 4°C for 3 months.

Images



Peptide - +

Immunohistochemical analysis of paraffin-embedded human brain tissue using Amyloid β A4 (Ab-743/668) antibody.



Peptide - +

Immunofluorescence analysis of HeLa cells, using Amyloid β A4 (Ab-743/668) antibody.