

Anti-IκB-ε (Ab-22) Polyclonal Antibody



<u>Catalog No.</u>	<u>Size</u>
A200005-01	50 μl
A200005-02	100 μl

Specificity	Anti-IκB-ε (Ab-22) (human mouse rat)
Source	Rabbit Polyclonal
Application	WB IHC ELISA IF
Form	Liquid, 1 mg/ml

Product

Swiss-Prot No.: O00221

Other Names: HS90B, HSP 84, HSP90-beta, HSP90AB1, HSPC2, HSPCB, Heat shock protein HSP 90-beta

Specificity and Sensitivity

I-kappa-B-epsilon, IKBE, IkappaBepsilon, NF-kappa-BIE, NF-kappaB inhibitor epsilon, NFKBIE

Source and Purification

The antiserum was produced against synthesized non-phosphopeptide derived from human IκB-ε around the phosphorylation site of serine 22 (I-E-S^P-L-R).

The antibody was affinity-purified from rabbit antiserum by affinity-chromatography using epitope-specific immunogen.

Application Notes

Optimal working dilutions should be determined experimentally by the investigator. Suggested starting dilutions are as follows:

WB: 1:500~1:3000 ELISA: 1:40000

IHC: 1:50~1:100 IF: 1:100~1:500

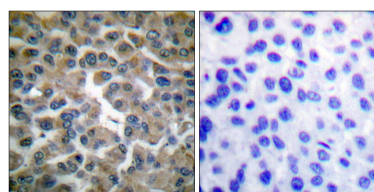
Storage Buffer

Rabbit IgG in phosphate buffered saline (without Mg²⁺ and Ca²⁺), pH 7.4, 150mM NaCl, 0.02% sodium azide and 50% glycerol.

Storage Instructions

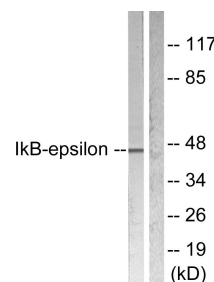
Stable for 1 year at -20°C from date of shipment. For maximum recovery of product, centrifuge the original vial after thawing and prior to removing the cap. Aliquot to avoid repeated freezing and thawing. Aliquot will be stable at 4°C for 3 months.

Images



Peptide - +

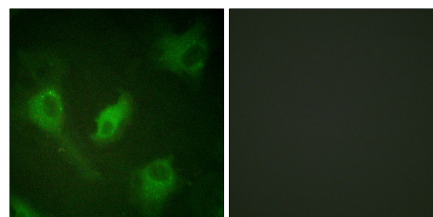
Immunohistochemical analysis of paraffin-embedded human breast carcinoma tissue using IκB-ε (Ab-22) antibody.



TNF-α + +

Peptide - +

Western blot analysis of extracts from HeLa cells treated with TNF-α (20ng/ml 5min), using IκB-ε (Ab-22) antibody.



TNF-α - +

Immunofluorescence analysis of HeLa cells, using IκB-ε (Ab-22) antibody.