

Anti- Akt (Ab-473) Polyclonal Antibody



<u>Catalog No.</u>	<u>Size</u>
A200013-01	50 µl
A200013-02	100 µl

Specificity	Anti- Akt (Ab-473) (Human Mouse Rat)
Source	Rabbit Polyclonal
Application	WB ELISA IHC
Form	Liquid, 1 mg/ml

Background Information

Swiss-Prot No.: P31749

Other Names: AKT; AKT1; AKT1 kinase; MGC99656; PKB; PKB-ALPHA; PRKBA; Protein kinase B; Proto-oncogene c-Akt; RAC; rac protein kinase alpha; RAC-ALPHA; RAC-alpha serine/threonine-protein kinase; RAC-PK-alpha; v-akt murine thymoma viral oncogene homolog 1

Specificity and Sensitivity

Akt (Ab-473) antibody detects endogenous levels of total AKT1 protein.

Source and Purification

The antiserum was produced against synthesized peptide derived from C-terminal of human AKT1.

The antibody was affinity-purified from rabbit antiserum by affinity-chromatography using epitope-specific immunogen.

Application Notes

Optimal working dilutions should be determined experimentally by the investigator. Suggested starting dilutions are as follows:

WB: 1:500~1:3000 IHC: 1:50~1:100 ELISA: 1:20000

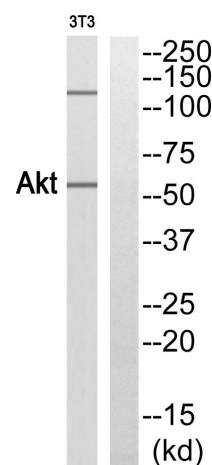
Storage Buffer

Rabbit IgG in phosphate buffered saline (without Mg²⁺ and Ca²⁺), pH 7.4, 150mM NaCl, 0.02% sodium azide and 50% glycerol.

Storage Instructions

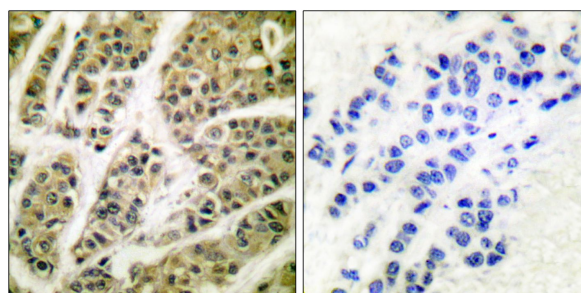
Stable for 1 year at -20°C from date of shipment. For maximum recovery of product, centrifuge the original vial after thawing and prior to removing the cap. Aliquot to avoid repeated freezing and thawing. Aliquot will be stable at 4°C for 3 months.

Images



Peptide: - +

Western blot analysis of extracts from 3T3 cells, using Akt (Ab-473) antibody.



Peptide: - +

Immunohistochemistry analysis of paraffin-embedded human breast carcinoma tissue, using Akt (Ab-473) antibody.