

Anti-Akt (Ab-308) Polyclonal Antibody



| <u>Catalog No.</u> | <u>Size</u> |
|--------------------|-------------|
| A200014-01 | 50 µl |
| A200014-02 | 100 µl |

| | |
|--------------------|-------------------------------------|
| Specificity | Anti-Akt (Ab-308) (human mouse rat) |
| Source | Rabbit Polyclonal |
| Application | WB IHC ELISA |
| Form | Liquid, 1 mg/ml |

Product

Swiss-Prot No.: P31749

Other Names: AKT, AKT1 kinase, C-AKT, EC 2.7.11.1, PKB, PKB-alpha, Protein kinase B, RAC, RAC-PK-alpha, RAC-alpha serine/threonine kinase, kinase Akt1

Specificity and Sensitivity

Akt (Ab-308) antibody detects endogenous levels of total Akt protein.

Source and Purification

The antiserum was produced against synthesized non-phosphopeptide derived from human Akt around the phosphorylation site of threonine 308 (M-K-T^P-F-C). The antibody was affinity-purified from rabbit antiserum by affinity-chromatography using epitope-specific immunogen.

Application Notes

Optimal working dilutions should be determined experimentally by the investigator. Suggested starting dilutions are as follows:

WB: 1:300~3000 ELISA: 1:20000 IHC: 1:50~1:100

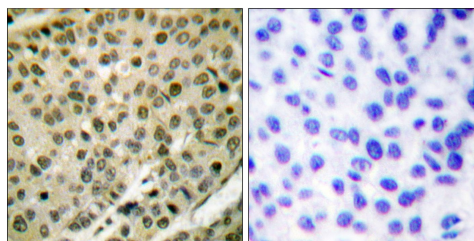
Storage Buffer

Rabbit IgG in phosphate buffered saline (without Mg²⁺ and Ca²⁺), pH 7.4, 150mM NaCl, 0.02% sodium azide and 50% glycerol.

Storage Instructions

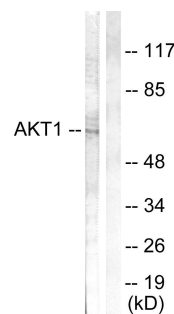
Stable for 1 year at -20°C from date of shipment. For maximum recovery of product, centrifuge the original vial after thawing and prior to removing the cap. Aliquot to avoid repeated freezing and thawing. Aliquot will be stable at 4°C for 3 months.

Images



Peptide - +

Immunohistochemistry analysis of paraffin-embedded human breast carcinoma tissue using Akt (Ab-308) antibody.



EGF ++
Peptide - +

Western blot analysis of extracts from 293 cells, treated with EGF (200ng/ml, 30mins), using Akt (Ab-308) antibody.