

Anti-Acetyl-CoA Carboxylase (Ab-80) Polyclonal Antibody



<u>Catalog No.</u>	<u>Size</u>
A200016-01	50 µl
A200016-02	100 µl

Specificity	Anti-Acetyl-CoA Carboxylase (Ab-80) (human mouse rat)
Source	Rabbit Polyclonal
Application	WB IHC ELISA
Form	Liquid, 1 mg/ml

Product

Swiss-Prot No.: Q13085

Other Names: EC 2.7.11.1, LIM domain kinase 1/2, LIMK-1/2, kinase LIMK1/2

Specificity and Sensitivity

Acetyl-CoA Carboxylase (Ab-80) antibody detects endogenous levels of total Acetyl-CoA Carboxylase protein.

Source and Purification

The antiserum was produced against synthesized non-phosphopeptide derived from human Acetyl-CoA Carboxylase around the phosphorylation site of serine 80 (S-M-S^P-G-L).

The antibody was affinity-purified from rabbit antiserum by affinity-chromatography using epitope-specific immunogen.

Application Notes

Optimal working dilutions should be determined experimentally by the investigator. Suggested starting dilutions are as follows:

WB: 1:500~3000 ELISA: 1:5000 IHC: 1:50~1:100

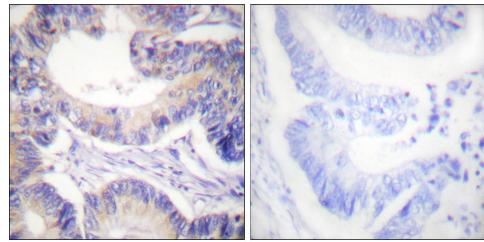
Storage Buffer

Rabbit IgG in phosphate buffered saline (without Mg²⁺ and Ca²⁺), pH 7.4, 150mM NaCl, 0.02% sodium azide and 50% glycerol.

Storage Instructions

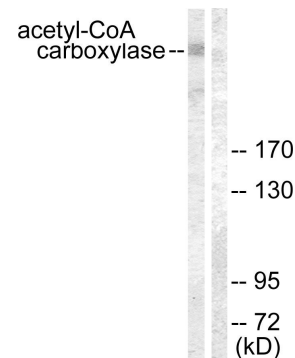
Stable for 1 year at -20°C from date of shipment. For maximum recovery of product, centrifuge the original vial after thawing and prior to removing the cap. Aliquot to avoid repeated freezing and thawing. Aliquot will be stable at 4°C for 3 months.

Images



Peptide - +

Immunohistochemical analysis of paraffin-embedded human breast carcinoma tissue using LIMK1/2 (Ab-508/505) antibody.



PMA + +

Peptide - +

Western blot analysis of extracts from NIH/3T3 cells treated with PMA (125ng/ml, 15min), using Acetyl-CoA Carboxylase (Ab-80) antibody.