

# Anti-BTK (Ab-222) Polyclonal Antibody



<u>Catalog No.</u>	<u>Size</u>
A200017-01	50 µl
A200017-02	100 µl

<b>Specificity</b>	Anti-BTK (Ab-222) (human mouse)
<b>Source</b>	Rabbit Polyclonal
<b>Application</b>	WB IHC ELISA
<b>Form</b>	Liquid, 1 mg/ml

## Product

**Swiss-Prot No.:** Q06187

**Other Names:** AGMX1, ATK, Agammaglobulinaemia tyrosine kinase, B cell progenitor kinase, BPK, Bruton's tyrosine kinase, EC 2.7.10.2, Kinase EMB, kinase Btk

## Specificity and Sensitivity

BTK (Ab-222) antibody detects endogenous levels of total BTK protein.

## Source and Purification

The antiserum was produced against synthesized non-phosphopeptide derived from human BTK around the phosphorylation site of tyrosine 222 (A-L-Y<sup>P</sup>-D-Y). The antibody was affinity-purified from rabbit antiserum by affinity-chromatography using epitope-specific immunogen.

## Application Notes

Optimal working dilutions should be determined experimentally by the investigator. Suggested starting dilutions are as follows:

WB: 1:500~3000    ELISA: 1:20000    IHC: 1:50~1:100

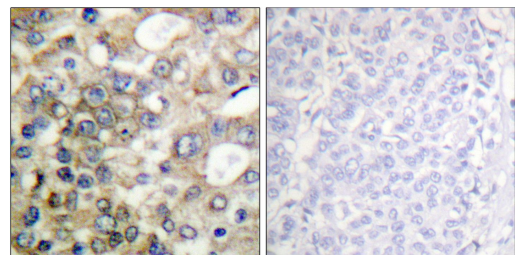
## Storage Buffer

Rabbit IgG in phosphate buffered saline (without Mg<sup>2+</sup> and Ca<sup>2+</sup>), pH 7.4, 150mM NaCl, 0.02% sodium azide and 50% glycerol.

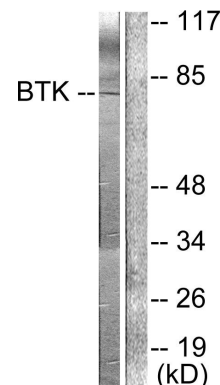
## Storage Instructions

Stable for 1 year at -20°C from date of shipment. For maximum recovery of product, centrifuge the original vial after thawing and prior to removing the cap. Aliquot to avoid repeated freezing and thawing. Aliquot will be stable at 4°C for 3 months.

## Images



P-peptide                    -                    +  
Immunohistochemical analysis of paraffin-embedded human breast carcinoma tissue using BTK (Ab-222) antibody.



Peptide                    -                    +  
Western blot analysis of extracts from Hela cells, using BTK (Ab-222) antibody (#B0054, Line 1 and 2).