

Anti-Cyclin E1 (Ab-395) Polyclonal Antibody



<u>Catalog No.</u>	<u>Size</u>
A200022-01	50 µl
A200022-02	100 µl

Specificity	Anti-Cyclin E1 (Ab-395) (human mouse)
Source	Rabbit Polyclonal
Application	WB IHC ELISA IF
Form	Liquid, 1 mg/ml

Product

Swiss-Prot No.: P24864

Other Names: CCNE, CCNE1, G1/S-specific cyclin E1

Specificity and Sensitivity

Cyclin E1 (Ab-395) antibody detects endogenous levels of total Cyclin E1 protein.

Source and Purification

The antiserum was produced against synthesized non-phosphopeptide derived from human Cyclin E1 around the phosphorylation site of threonine 395 (L-L-T-P-P).

The antibody was affinity-purified from rabbit antiserum by affinity-chromatography using epitope-specific immunogen.

Application Notes

Optimal working dilutions should be determined experimentally by the investigator. Suggested starting dilutions are as follows:

WB: 1:500~1:3000 ELISA: 1:10000
IHC: 1:50~1:100 IF: 1:500~1:1000

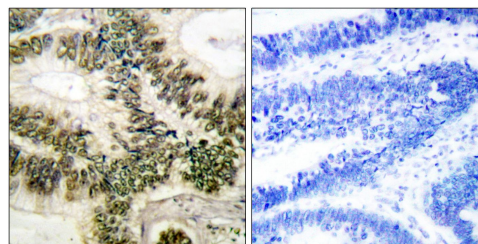
Storage Buffer

Rabbit IgG in phosphate buffered saline (without Mg²⁺ and Ca²⁺), pH 7.4, 150mM NaCl, 0.02% sodium azide and 50% glycerol.

Storage Instructions

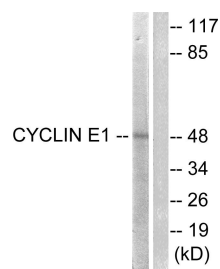
Stable for 1 year at -20°C from date of shipment. For maximum recovery of product, centrifuge the original vial after thawing and prior to removing the cap. Aliquot to avoid repeated freezing and thawing. Aliquot will be stable at 4°C for 3 months.

Images



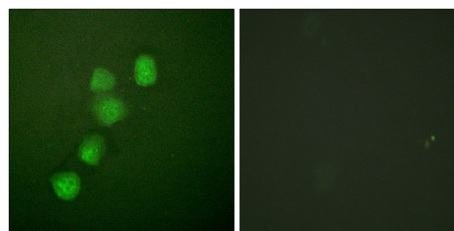
Peptide - +

Immunohistochemical analysis of paraffin-embedded human colon carcinoma tissue, using Cyclin E1 (Ab-395) antibody.



Paclitaxel + +
Peptide - +

Western blot analysis of extracts from HeLa cells, treated with Paclitaxel (1uM, 60mins), using Cyclin E1 (Ab-395) antibody.



Peptide - +

Immunofluorescence analysis of HuvEc cells, using Cyclin E1 (Ab-395) antibody.