

Anti-HSL (Ab-554) Polyclonal Antibody



Catalog No.	Size
A200025-01	50 µl
A200025-02	100 µl

Specificity	Anti-HSL (Ab-554) (Human Mouse Rat)
Source	Rabbit Polyclonal
Application	WB ELISA IHC
Form	Liquid, 1 mg/ml

Product

Swiss-Prot No.: Q05469

Other Names: EC 3.1.1.79, Hormone sensitive lipase, LIPE, LIPS

Specificity and Sensitivity

HSL (Ab-554) antibody detects endogenous levels of total HSL protein.

Source and Purification

The antiserum was produced against synthesized non-phosphopeptide derived from human HSL around the phosphorylation site of serine 554 (S-V-S^P-E-A).

The antibody was affinity-purified from rabbit antiserum by affinity-chromatography using epitope-specific immunogen.

Application Notes

Optimal working dilutions should be determined experimentally by the investigator. Suggested starting dilutions are as follows:

WB: 1:500~1:3000 IHC: 1:50~1:100

ELISA: 1:1000

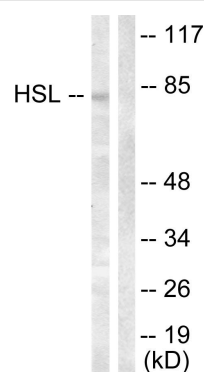
Storage Buffer

Rabbit IgG in phosphate buffered saline (without Mg²⁺ and Ca²⁺), pH 7.4, 150mM NaCl, 0.02% sodium azide and 50% glycerol.

Storage Instructions

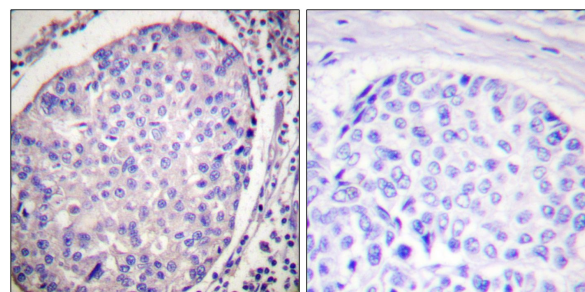
Stable for 1 year at -20°C from date of shipment. For maximum recovery of product, centrifuge the original vial after thawing and prior to removing the cap. Aliquot to avoid repeated freezing and thawing. Aliquot will be stable at 4°C for 3 months.

Images



P-peptide - +

Western blot analysis of extracts from HeLa cells, treated with Calyculin A (100nM, 30mins), using HSL (Ab-554) antibody.



P-peptide - +

Immunohistochemistry analysis of paraffin-embedded human breast carcinoma tissue using HSL (Ab-554) antibody.