

Anti-PLC- β (Ab-1105) Polyclonal Antibody



<u>Catalog No.</u>	<u>Size</u>
A200027-01	50 μ l
A200027-02	100 μ l

Specificity	Anti-PLC- β (Ab-1105) (human mouse rat)
Source	Rabbit Polyclonal
Application	WB IHC ELISA
Form	Liquid, 1 mg/ml

Product

Swiss-Prot No.: Q01970

Other Names: 1-phosphatidylinositol-4,5-bisphosphate phosphodiesterase beta 3, EC 3.1.4.11, Phosphoinositide phospholipase C, Phospholipase C-beta-3, PLC-beta-3, PLCB3

Specificity and Sensitivity

PLC- β (Ab-1105) antibody detects endogenous levels of total PLC- β protein.

Source and Purification

The antiserum was produced against synthesized non-phosphopeptide derived from human PLC- β around the phosphorylation site of serine 1105 (N-N-S-I-S).

The antibody was affinity-purified from rabbit antiserum by affinity-chromatography using epitope-specific immunogen.

Application Notes

Optimal working dilutions should be determined experimentally by the investigator. Suggested starting dilutions are as follows:

WB: 1:500~1:3000 ELISA: 1:40000 IHC: 1:50~1:100

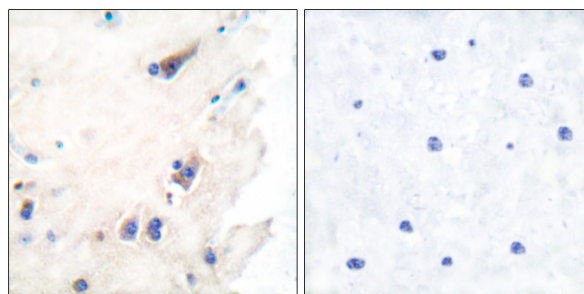
Storage Buffer

Rabbit IgG in phosphate buffered saline (without Mg²⁺ and Ca²⁺), pH 7.4, 150mM NaCl, 0.02% sodium azide and 50% glycerol.

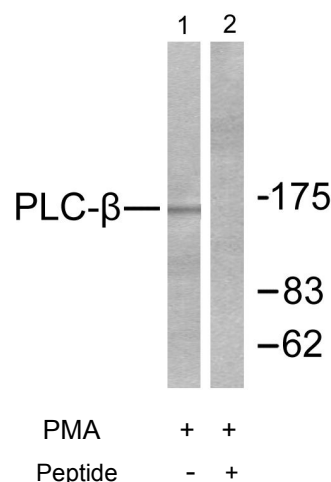
Storage Instructions

Stable for 1 year at -20°C from date of shipment. For maximum recovery of product, centrifuge the original vial after thawing and prior to removing the cap. Aliquot to avoid repeated freezing and thawing. Aliquot will be stable at 4°C for 3 months.

Images



Peptide - +
Immunohistochemical analysis of paraffin-embedded human brain tissue using PLC- β (Ab-1105) antibody.



Western blot analysis of extracts from HeLa cells treated with PMA (125ng/ml, 30min), using PLC- β (Ab-1105) antibody.