

# Anti-4E-BP1 (Ab-69) Polyclonal Antibody



Catalog No.	Size
A200035-01	50 $\mu$ l
A200035-02	100 $\mu$ l

<b>Specificity</b>	Anti-4E-BP1 (Ab-69) (human mouse rat)
<b>Source</b>	Rabbit Polyclonal
<b>Application</b>	WB IHC ELISA
<b>Form</b>	Liquid, 1 mg/ml

## Product

**Swiss-Prot No.:** Q13541

**Other Names:** 4EBP1, EIF4EBP1, Eukaryotic translation initiation factor 4E binding protein 1, Insulin-stimulated EIF-4E binding protein PHAS-I, P/OKCL.6, PHAS-1, PHAS-I

## Specificity and Sensitivity

4E-BP1 (Ab-69) antibody detects endogenous levels of total 4E-BP1 protein.

## Source and Purification

The antiserum was produced against synthesized non-phosphopeptide derived from human 4E-BP1 around the phosphorylation site of threonine 70 (A-K-T-P-P).

The antibody was affinity-purified from rabbit antiserum by affinity-chromatography using epitope-specific immunogen.

## Application Notes

Optimal working dilutions should be determined experimentally by the investigator. Suggested starting dilutions are as follows:

WB: 1:500~1:3000    ELISA: 1:5000    IHC: 1:50~1:100

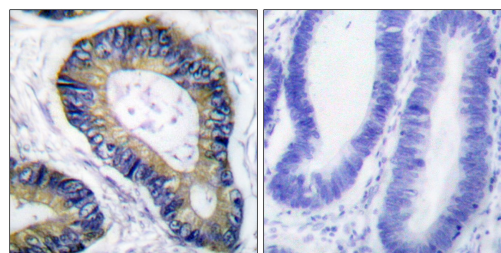
## Storage Buffer

Rabbit IgG in phosphate buffered saline (without  $Mg^{2+}$  and  $Ca^{2+}$ ), pH 7.4, 150mM NaCl, 0.02% sodium azide and 50% glycerol.

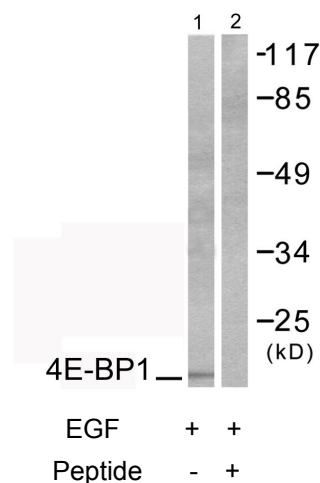
## Storage Instructions

Stable for 1 year at  $-20^{\circ}C$  from date of shipment. For maximum recovery of product, centrifuge the original vial after thawing and prior to removing the cap. Aliquot to avoid repeated freezing and thawing. Aliquot will be stable at  $4^{\circ}C$  for 3 months.

## Images



Peptide                    -                    +  
Immunohistochemical analysis of paraffin-embedded human colon carcinoma tissue using 4E-BP1 (Ab-69) antibody.



Western blot analysis of extracts from COS7 cells, treated with EGF (200ng/ml, 30mins), using 4E-BP1 (Ab-69) antibody.